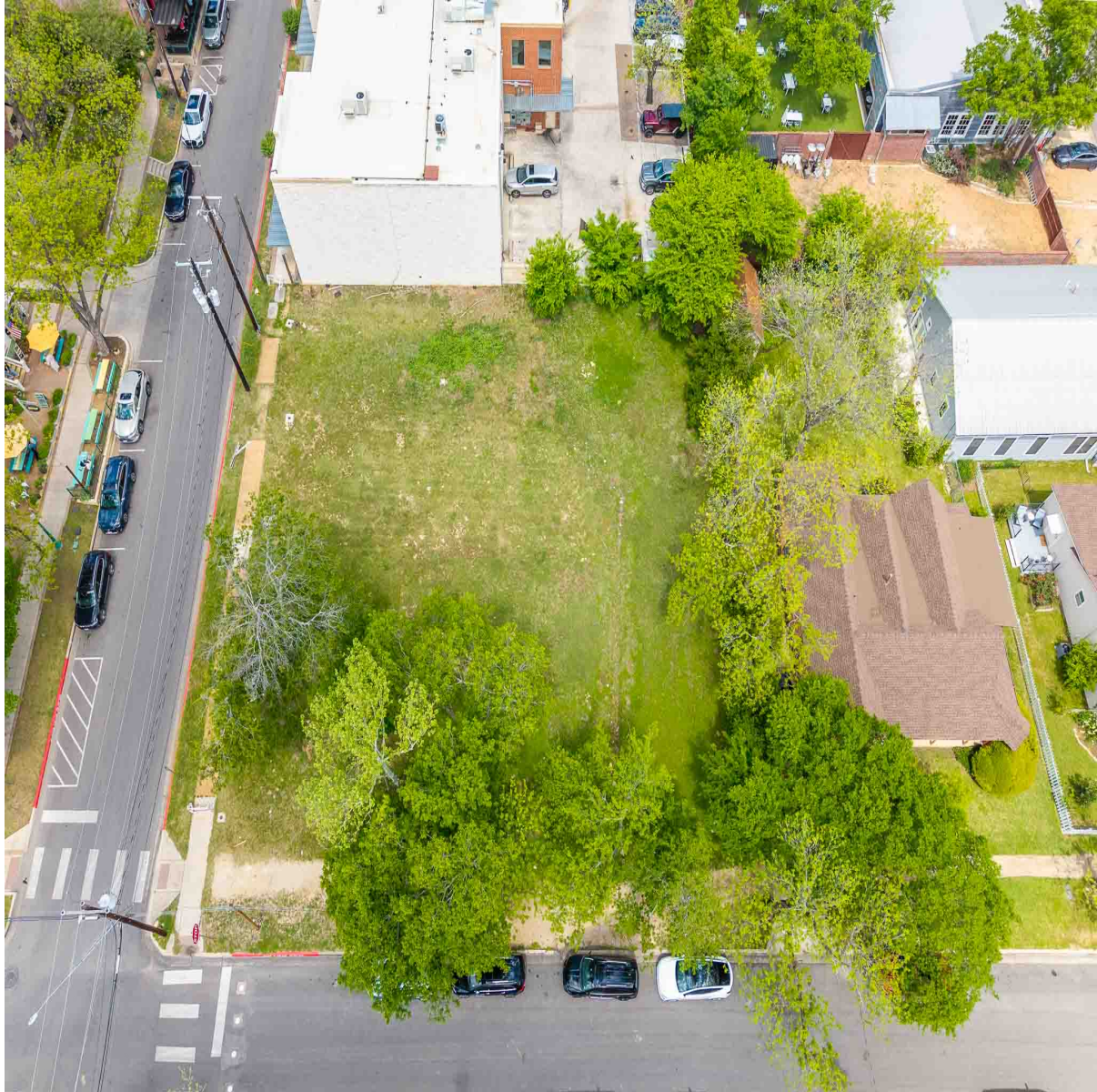


# CENTURY 21<sup>®</sup>

Judge Fite Company



## 203 E 9TH STREET

GEORGETOWN, TX 78626



\$275,000



0 sqft

## DESCRIPTION

Prime 0.11 acre commercial infill lot in a strategic location only two blocks away from the Historic Georgetown Square. Zoned "C5 Commercial" allowing for a variety of potential uses including retail, office, medical, restaurant, and others. Buyer to verify zoning restrictions and permitted use. Rare opportunity to acquire a lot in a prime growth corridor of one the fastest-growing cities in the U.S. Contact listing agent for details.

**CENTURY 21**

Judge Fite Company

**800.451.8055**

**PROPERTY TYPE:** Commercial - Retail  
**MLS STATUS:** Active  
**MLS:** 6631520  
**YEAR BUILT:** 1900  
**COUNTY:** Williamson  
**TRACT OR SUBDIVIION:** Glasscock Add  
**LIST DATE:** 04/11/2026

**AREA:** GTE  
**SQUARE FEET:**  
**TOTAL BEDS:**  
**FULL BATHS:**  
**HALF BATHS:**  
**ACRES:** 0.11  
**LOT SIZE (SQFT):** 4,791

## INTERIOR FEATURES

### KITCHEN:

- None

### FLOOR COVERINGS:

- SeeRemarks

## EXTERIOR FEATURES

### PARKING:

- SeeRemarks

## UTILITIES

### HEATING/COOLING:

- None

### UTILITIES:

- ElectricityAvailable
- SewerAvailable
- WaterAvailable

## ADDITIONAL PROPERTY DETAILS

**LISTED BY:** Max Son

**PHONE:** 512.415.6244

**BROKERED BY:** Real Broker, LLC