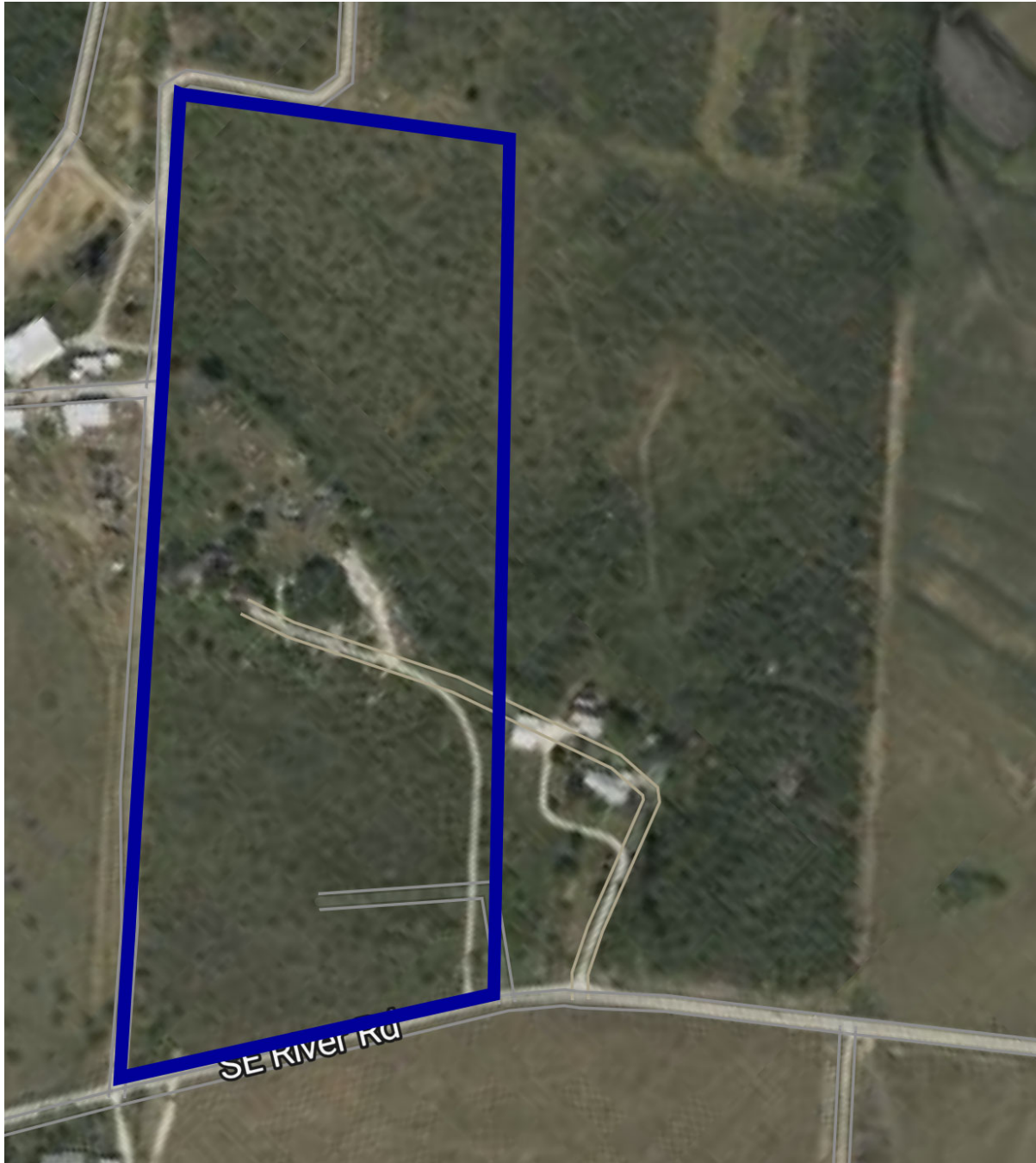


CENTURY 21[®]

Judge Fite Company



4921 SE RIVER ROAD

MARTINDALE, TX 78655



\$1,350,000



1,000 sqft

DESCRIPTION

20 Acres in Martindale, no zoning, utilities available at the gate entrance. Potential for a residential rural subdivision, commercial development or industrial use. Level with high ground providing views and potential to expand the livestock tank. Fencing in place and adjacent to developing residential area with access to San Marcos, New Braunfels, Austin, Lockhart, Luling and San Antonio with access from TX 130.

CENTURY 21

Judge Fite Company

800.451.8055

PROPERTY TYPE: Commercial - Warehouse

MLS STATUS: Active

MLS: 6604142

YEAR BUILT:

COUNTY: Caldwell

TRACT OR SUBDIVIION: A019 - MORRISON, STEPHEN B.

LIST DATE: 04/17/2026

AREA: CC

SQUARE FEET: 1,000

TOTAL BEDS:

FULL BATHS:

HALF BATHS:

ACRES: 20

LOT SIZE (SQFT): 871,200

INTERIOR FEATURES

KITCHEN:

- None

FLOOR COVERINGS:

- SeeRemarks

EXTERIOR FEATURES

PARKING:

- None

UTILITIES

HEATING/COOLING:

- None

UTILITIES:

- ElectricityConnected
- WaterAvailable
- WaterConnected

ADDITIONAL PROPERTY DETAILS

LISTED BY: Edwin Kirkpatrick

PHONE: 512.651.7000

BROKERED BY: Texas Realty Partners, LLC

century21judgefite.com

each office is independently owned and operated