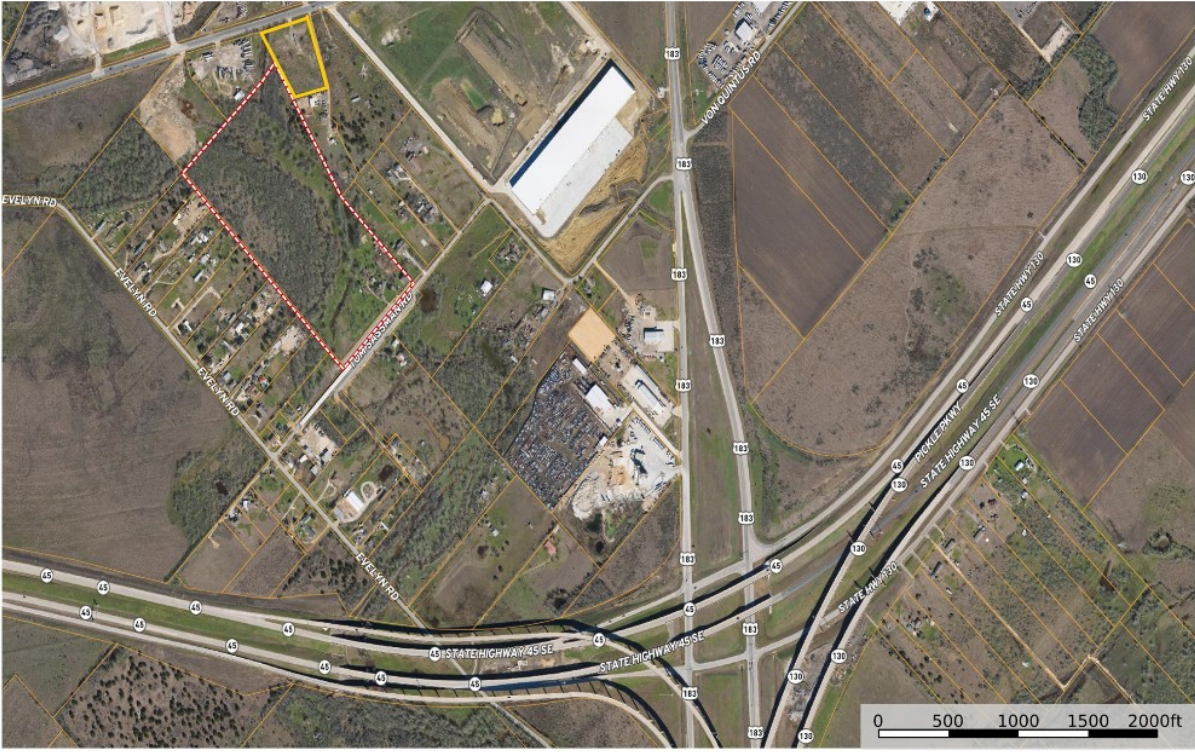


CENTURY 21

Judge Fite Company

11248 Tom Sassman, Austin, TX 78747
Travis County, Texas, 28.5 AC +/-



id The information contained herein was obtained from sources deemed to be reliable. Land ID® Services makes no warranties or guarantees as to the completeness or accuracy thereof.

11248 TOM SASSMAN ROAD AUSTIN, TX 78747



\$1,635,000



2,128 sqft

DESCRIPTION

Unlimited potential on this approximately 28 acre property just minutes South of Downtown Austin. Located 1/2 mile from the intersection of 183/45/130. No Restrictions. Great for industrial development, commercial, or a contractor's home and business. Multiple outbuildings located on the property, including 2 homes, storage shed and a barn. Acreage boasts large trees and is fully fenced and cross fenced. Current Ag/Wildlife exemption. Partial floodplain. Included is a 1996 3bed-2bath Doublewide MH and a 2bed-1bath Farmhouse which makes for a great guest house. 3 water meters, 3 electric meters, 2 new septic systems. Tons of development going around this property. Only 15 miles to ABIA Airport. 6 miles to Circuit of the Americas. 16 miles to the new Tesla site. Tom Sassman Road has been revitalized with a wider road and a new bridge over Maha Creek. *Disclaimers: All information contained is deemed reliable but not guaranteed, buyer must verify.

PROPERTY TYPE: Commercial - Other

MLS STATUS: Active

MLS: 2983177

YEAR BUILT: 1996

COUNTY: Travis

TRACT OR SUBDIVIION: MAHA CREEK ESTATES

LIST DATE: 01/12/2025

CENTURY 21

Judge Fite Company

800.451.8055

AREA: SC

SQUARE FEET: 2,128

TOTAL BEDS:

FULL BATHS:

HALF BATHS:

ACRES: 28.54

LOT SIZE (SQFT): 1,243,015

INTERIOR FEATURES

FLOOR COVERINGS:

- Carpet
- Linoleum

EXTERIOR FEATURES

PARKING:

- Carport
- DetachedCarport
- Outside
- Storage

SIDING:

- MetalSiding

FOUNDATION:

- None

UTILITIES

HEATING/COOLING:

- HeatPump

UTILITIES:

- AboveGroundUtilities
- ElectricityConnected
- WaterConnected

ADDITIONAL PROPERTY DETAILS

LISTED BY: Gary Steele

PHONE: 512.426.9800

BROKERED BY: Keller Williams Realty

century21judgefite.com

each office is independently owned and operated