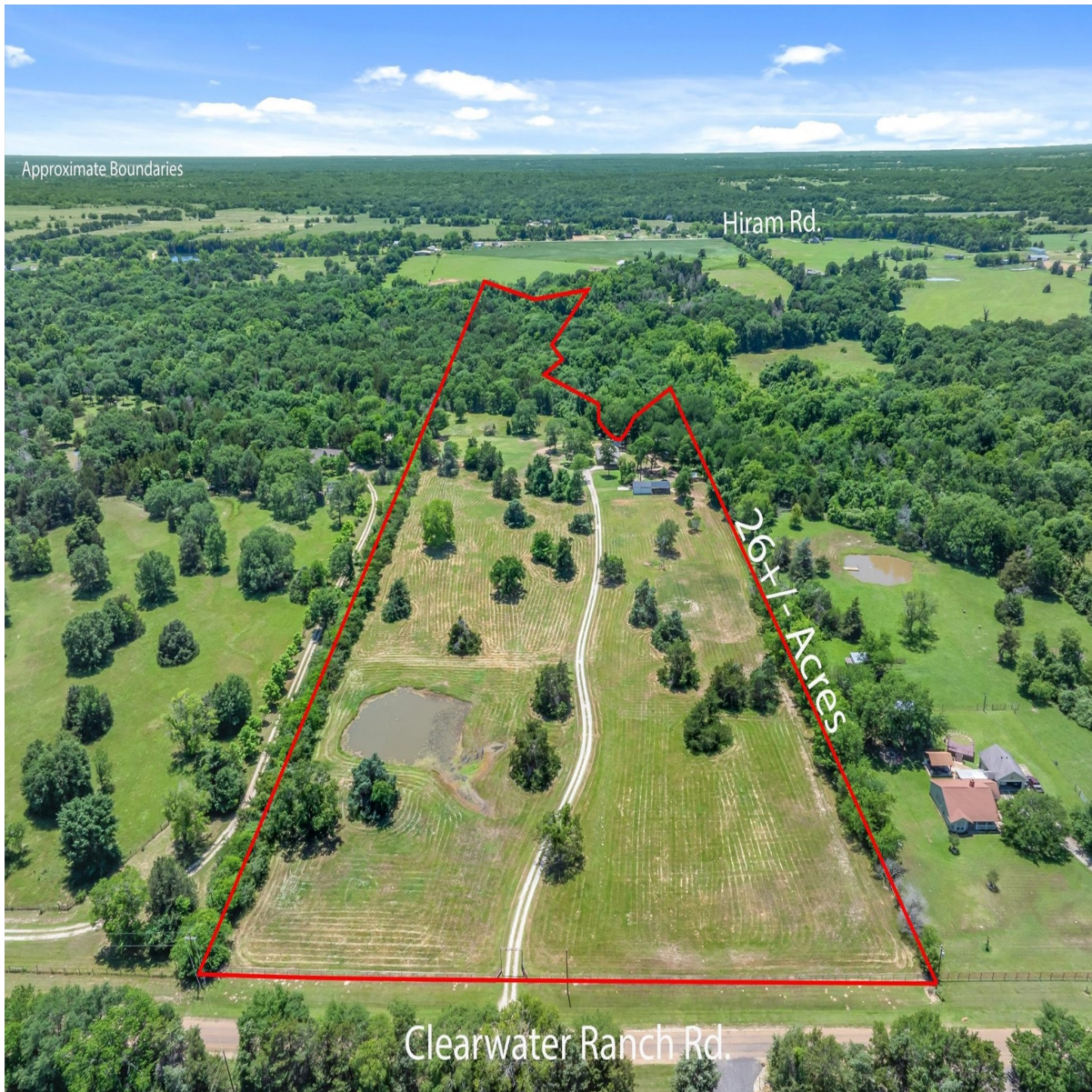


CENTURY 21

Judge Fite Company



6663 CLEARWATER RANCH ROAD

WILLS POINT, TX 75169



\$999,900



1,966 sqft



2 beds



2 baths

DESCRIPTION

Tucked away among the trees at the end of a LONG WINDING DRIVEWAY, this gorgeous property offers the perfect blend of privacy, convenience, and East Texas beauty! Situated on 26 STUNNING acres in an unbeatable location just one mile off I20, you will enjoy quick and easy access to both Dallas and Tyler at only about 45 minutes to Dallas and 1 hour to Tyler, while still feeling worlds away from the hustle and bustle! The charming home features 2 bedrooms and 2 bathrooms, with a flexible floorplan that could EASILY ACCOMODATE A THIRD BEDROOM by utilizing one of the existing oversized closets so there is plenty of room for everyone! Inside, you will love the spacious OPEN CONCEPT design highlighted by soaring vaulted ceilings, creating an inviting atmosphere with plenty of natural light and room to entertain, highlighted by a stand alone FIREPLACE for those cozy winter nights! As you explore the property, the beauty of the land truly shines! The acreage stretches back to a scenic creek and provides INCREDIBLE WILDLIFE with an abundance of deer frequently seen throughout the property! Whether you enjoy hunting, recreation, or simply relaxing in nature, this ranch offers an exceptional outdoor experience you have been dreaming of without losing the convenience of quick city access! Additional improvements include two workshops perfect for equipment storage, hobbies, or business use, along with a GATED ENTRANCE for added privacy and security! With the home hidden from the road among mature trees, this property delivers the peaceful ranch lifestyle people dream of while remaining incredibly accessible for commuting, weekend getaways, or full time country living! Schedule your private tour today!

PROPERTY TYPE: Residential - Single Family Residence
MLS STATUS: Active
MLS: 21271928
YEAR BUILT: 1999
COUNTY: Kaufman
TRACT OR SUBDIVIION: Clearwater Ranch
LIST DATE: 05/16/2026

CENTURY 21

Judge Fite Company

800.451.8055

AREA:
SQUARE FEET: 1,966
TOTAL BEDS: 2
FULL BATHS: 2
HALF BATHS: 0
ACRES: 26.94
LOT SIZE (SQFT): 1,173,506

INTERIOR FEATURES

FIREPLACE:

- FreeStanding

FLOOR COVERINGS:

- Carpet
- CeramicTile

APPLIANCES:

- Dishwasher
- ElectricRange
- Microwave

VIRTUAL TOUR:

- [View virtual tour](#)

EXTERIOR FEATURES

STYLE:

- Ranch
- Detached

PARKING:

- Carport

LOT DESCRIPTION:

- Acreage
- Pasture
- PondOnLot
- ManyTrees

ROOF TYPE:

- Composition

SIDING:

- Brick

POOL TYPE:

- None

FOUNDATION:

- Slab

FENCING:

- BarbedWire

UTILITIES

HEATING/COOLING:

- Central
- Electric

UTILITIES:

- ElectricityAvailable
 - None
 - OverheadUtilities
 - WaterAvailable
-

ADDITIONAL PROPERTY DETAILS

AMENITIES:

- HighSpeedInternet
 - KitchenIsland
 - OpenFloorplan
 - VaultedCeilings
-

LISTED BY: Kaedon Kesterson 

BROKERED BY: RE/MAX Landmark Edgewood