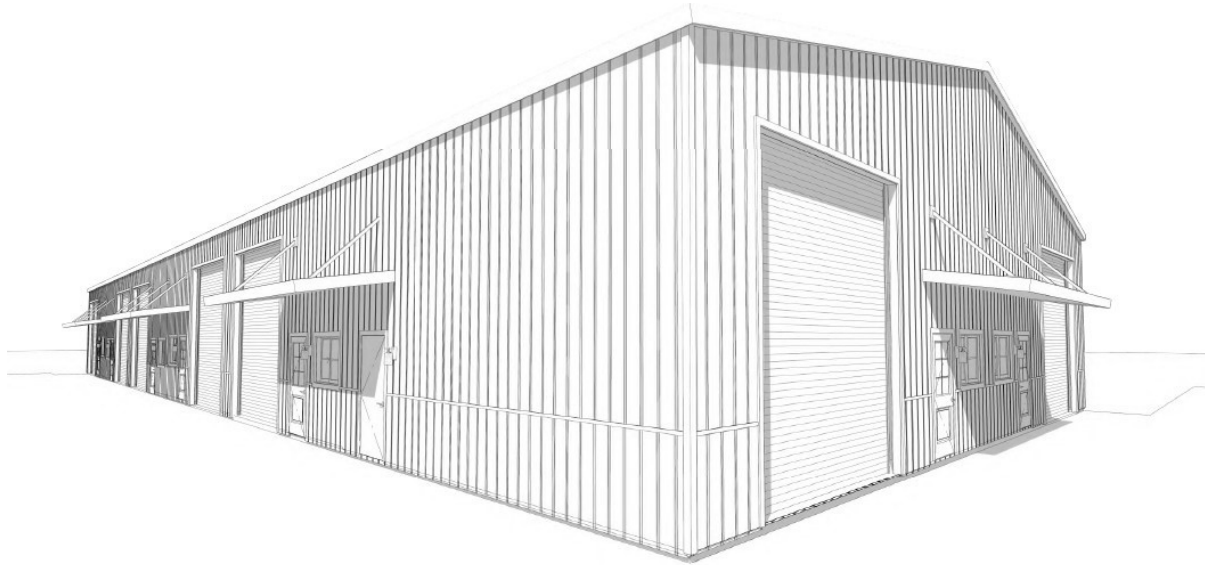


# CENTURY 21<sup>®</sup>

Judge Fite Company



## **BUILDING - A**

11130 STATE HIGHWAY 205 HIGHWAY

LAVON, TX 75166



\$1,950,000



9,360 sqft

---

## DESCRIPTION

Building A is currently under construction, with 7 units it is anticipated to be available this summer. Owner financing is available. Each flex unit includes office space, a half bath, and the option to add additional office space to fit your needs. HVAC is included in the office and restroom area, with the option to extend HVAC throughout the entire warehouse space. POA dues include water, trash, septic services, and maintenance of all common areas. Electricity will be managed by the owner. Conveniently located with frontage on State Highway 205, offering excellent visibility and exposure with projected traffic counts estimated to exceed 40,000 vehicles per day. Ideal for office, warehouse, contractor, showroom, or flex-space use.

**PROPERTY TYPE:** Commercial - Industrial  
**MLS STATUS:** Active  
**MLS:** 21265813  
**YEAR BUILT:** 2026  
**COUNTY:** Collin  
**TRACT OR SUBDIVIION:** Lavon Business Park  
**LIST DATE:** 05/10/2026

**CENTURY 21**

Judge Fite Company

**800.451.8055**

**AREA:**  
**SQUARE FEET:** 9,360  
**TOTAL BEDS:**  
**FULL BATHS:**  
**HALF BATHS:**  
**ACRES:** 2.98  
**LOT SIZE (SQFT):** 129,765

## INTERIOR FEATURES

### FLOOR COVERINGS:

- Concrete

### VIRTUAL TOUR:

- [View virtual tour](#)

## EXTERIOR FEATURES

### PARKING:

- Assigned

### LOT DESCRIPTION:

- Acreage

### ROOF TYPE:

- Metal

### SIDING:

- Frame
- MetalSiding
- Concrete

### FOUNDATION:

- Slab

## UTILITIES

### HEATING/COOLING:

- Electric

### UTILITIES:

- ElectricityAvailable
- SepticAvailable
- WaterAvailable

## ADDITIONAL PROPERTY DETAILS

**LISTED BY:** Marie Gajkowski 

**PHONE:** 972.284.9284

**BROKERED BY:** JBRE Group

century21judgefite.com

each office is independently owned and operated