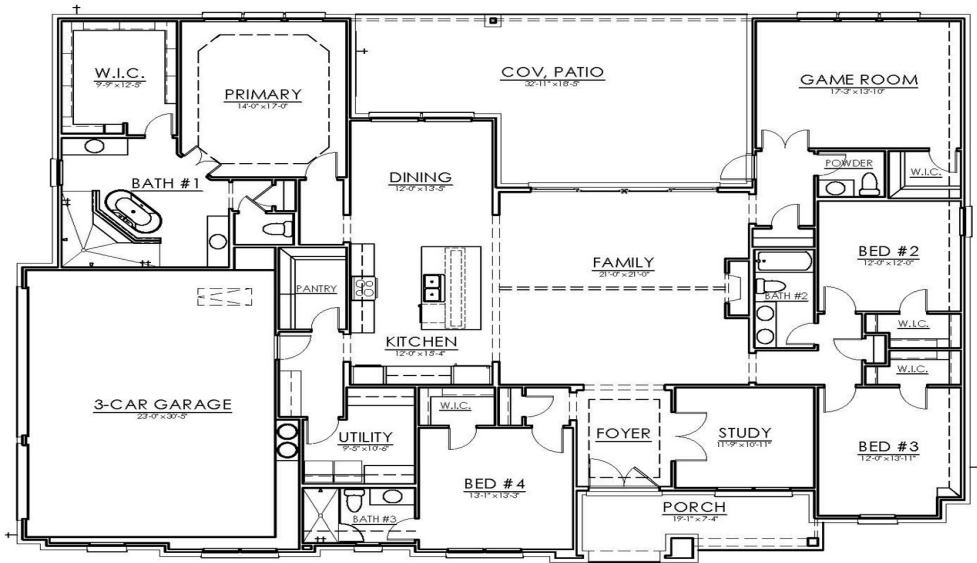


CENTURY 21®

Judge Fite Company



535 ECHO GLADE COURT

AZLE, TX 76020



\$835,000



3,200 sqft



4 beds



4 baths

DESCRIPTION

Under Construction in Azle – Custom Single-Story by Shelton Custom Homes
Estimated completion: September 1. Secure the home by June 15 and personalize select finishes to match your style. Situated on a spacious 2.11-acre lot in the gated Deer Glade community—with no HOA—this thoughtfully designed 4-bedroom, 3.5-bath home with a 3-car garage offers the perfect blend of luxury and functionality. Inside, you'll find an open-concept layout highlighted by a vaulted living room ceiling, abundant natural light, and a cozy fireplace with gas starter. The home also features a private study and a dedicated game room, providing flexibility for both work and entertainment. The kitchen is built to impress with a double oven, gas cooktop, and ample space for gathering. Elegant double iron front doors create a striking first impression, while the expansive back patio is ideal for relaxing or hosting guests. A private mother-in-law suite with its own full bath adds versatility and comfort for guests or multi-generational living. Designed with energy efficiency in mind, the home includes a gas heating system, gas water heater, and radiant barrier decking. Located outside city limits, this property offers the tranquility of country living with the security of a gated community.

PROPERTY TYPE: Residential - Single Family Residence

MLS STATUS: Active

MLS: 21244498

YEAR BUILT: 2026

COUNTY: Parker

TRACT OR SUBDIVIION: Deer Glade-Ph 1

LIST DATE: 04/22/2026

CENTURY 21

Judge Fite Company

800.451.8055

AREA:

SQUARE FEET: 3,200

TOTAL BEDS: 4

FULL BATHS: 3

HALF BATHS: 1

ACRES: 2.11

LOT SIZE (SQFT): 91,911

INTERIOR FEATURES

FIREPLACE:

- GasStarter

APPLIANCES:

- DoubleOven
- Dishwasher
- ElectricRange
- GasCooktop
- GasWaterHeater

EXTERIOR FEATURES

STYLE:

- Detached

PARKING:

- GarageFacesSide

LOT DESCRIPTION:

- Acreage
- FewTrees

ROOF TYPE:

- Composition

POOL TYPE:

- None

FOUNDATION:

- Slab

UTILITIES

HEATING/COOLING:

- Central
- Propane

UTILITIES:

- SepticAvailable
- WaterAvailable

ADDITIONAL PROPERTY DETAILS

AMENITIES:

- InLawFloorplan
 - KitchenIsland
 - MultipleMasterSuites
 - OpenFloorplan
 - Pantry
 - WalkInClosets
-

LISTED BY: David Silva 

PHONE: 817.734.4770

BROKERED BY: CCS Realty Group