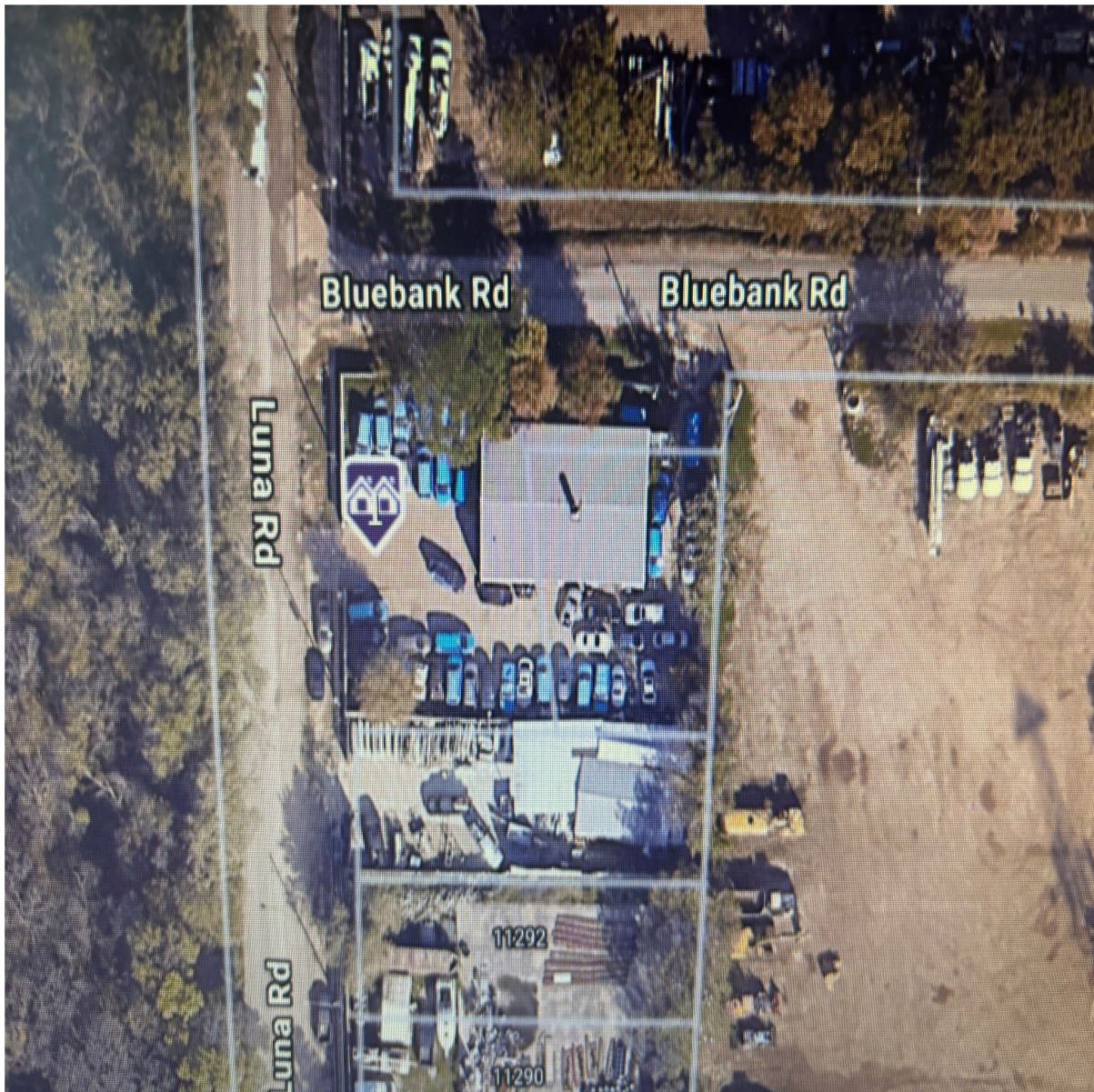


CENTURY 21[®]

Judge Fite Company



11298 LUNA ROAD

DALLAS, TX 75229



\$1,390,000



3,196 sqft

DESCRIPTION

***** LOCATION, LOCATION, LOCATION ***** Amazing Corner Lot property so close to Major Highways. Hwy 635, 35 E, George Bush & 114. Lot size is above 6500 SQFT, the 2-story building is about 3,190 SQFT with 3 offices & 2 bathrooms on first floor & 2 offices on 2nd floor. Great location to do multiple businesses, transportation, Auto Services, warehouse, storage. ***** Do Not Miss Out *****

CENTURY 21

Judge Fite Company

800.451.8055

PROPERTY TYPE: Commercial - Industrial
MLS STATUS: Active
MLS: 21233626
YEAR BUILT: 2007
COUNTY: Dallas
TRACT OR SUBDIVIION: Ambassador
LIST DATE: 04/23/2026

AREA:
SQUARE FEET: 3,196
TOTAL BEDS:
FULL BATHS:
HALF BATHS:
ACRES: 0.15
LOT SIZE (SQFT): 6,621

INTERIOR FEATURES

FLOOR COVERINGS:

- Vinyl

VIRTUAL TOUR:

- [View virtual tour](#)

EXTERIOR FEATURES

PARKING:

- AdditionalParking
- OnSite
- OnStreet

ROOF TYPE:

- Composition

SIDING:

- Concrete

FOUNDATION:

- Slab

UTILITIES

HEATING/COOLING:

- Central

UTILITIES:

- ElectricityAvailable
- ElectricityConnected
- NaturalGasAvailable
- SewerAvailable
- SeparateMeters
- WaterAvailable

ADDITIONAL PROPERTY DETAILS

LISTED BY: Sonya Rafie 

PHONE: 972.948.9200

BROKERED BY: Sonya Realty, LLC

century21judgefite.com

each office is independently owned and operated