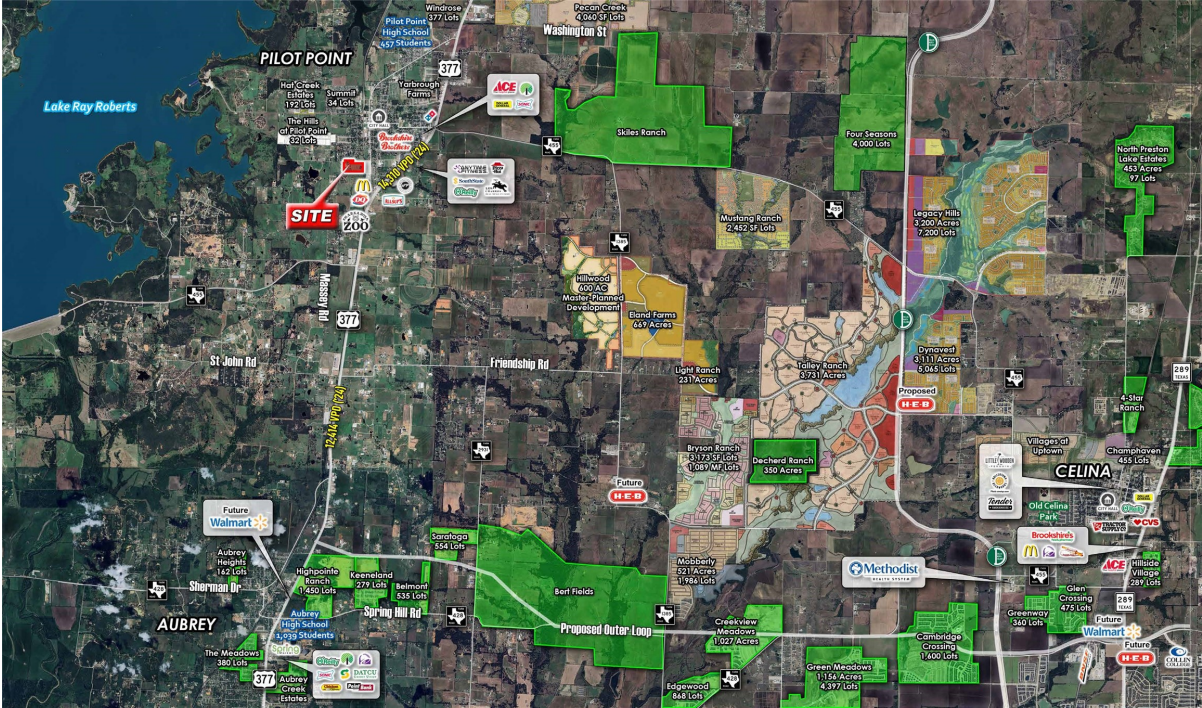


CENTURY 21®

Judge Fite Company



819 S MORRISON STREET

PILOT POINT, TX 76258



\$3,250,000



1 acres

DESCRIPTION

26.07 acres located within the city limits of Pilot Point, with access to city utilities, positioned directly in the path of North Texas' continued northward expansion. Pilot Point is experiencing rapid population growth, with strong projections over the next decade, positioning the city as one of the next North Texas markets poised to take off as development continues pushing north. At 26 acres, this is a highly desirable mid-size tract—large enough to support a thoughtfully planned single-family development, yet manageable for a mid-size builder or investor seeking a strategic buy-and-hold in the path of growth. The area is being actively shaped by major institutional players, including Hillwood Communities, Green Brick Partners, Centurion American, and D.R. Horton, all contributing to nearby master-planned communities delivering thousands of future residential lots. Strategically located near Highway 377 and FM 455, the property offers excellent regional connectivity while benefiting from the continued northward extension of the Dallas North Tollway, driving residential demand beyond Frisco, Prosper, and Celina into Pilot Point. Just minutes from Lake Ray Roberts, the property benefits from one of North Texas' premier recreational amenities—enhancing long-term residential appeal with access to boating, fishing, and outdoor recreation. The property benefits from a current ag exemption. Multiple water and sewer taps are already present on the property.

PROPERTY TYPE: Land - Improved Land

MLS STATUS: Active

MLS: 21233160

YEAR BUILT:

COUNTY: Denton

TRACT OR SUBDIVISION: C Smith

LIST DATE: 04/10/2026

CENTURY 21

Judge Fite Company

800.451.8055

AREA:

SQUARE FEET:

TOTAL BEDS:

FULL BATHS:

HALF BATHS:

ACRES: 26.07

LOT SIZE (SQFT): 1,135,609

INTERIOR FEATURES

VIRTUAL TOUR:

- [View virtual tour](#)

EXTERIOR FEATURES

LOT DESCRIPTION:

- Acreage
- Agricultural
- FewTrees
- CityLot

YARD/GROUNDS:

- Storage

FENCING:

- BarbedWire
- Partial

UTILITIES

UTILITIES:

- ElectricityAvailable
- ElectricityConnected
- SewerAvailable
- WaterAvailable

LISTED BY: Kelsey Whitesell 

ADDITIONAL PROPERTY DETAILS

PHONE: 940.310.6218

BROKERED BY: Talley and Company, LTD

century21judgefite.com

each office is independently owned and operated