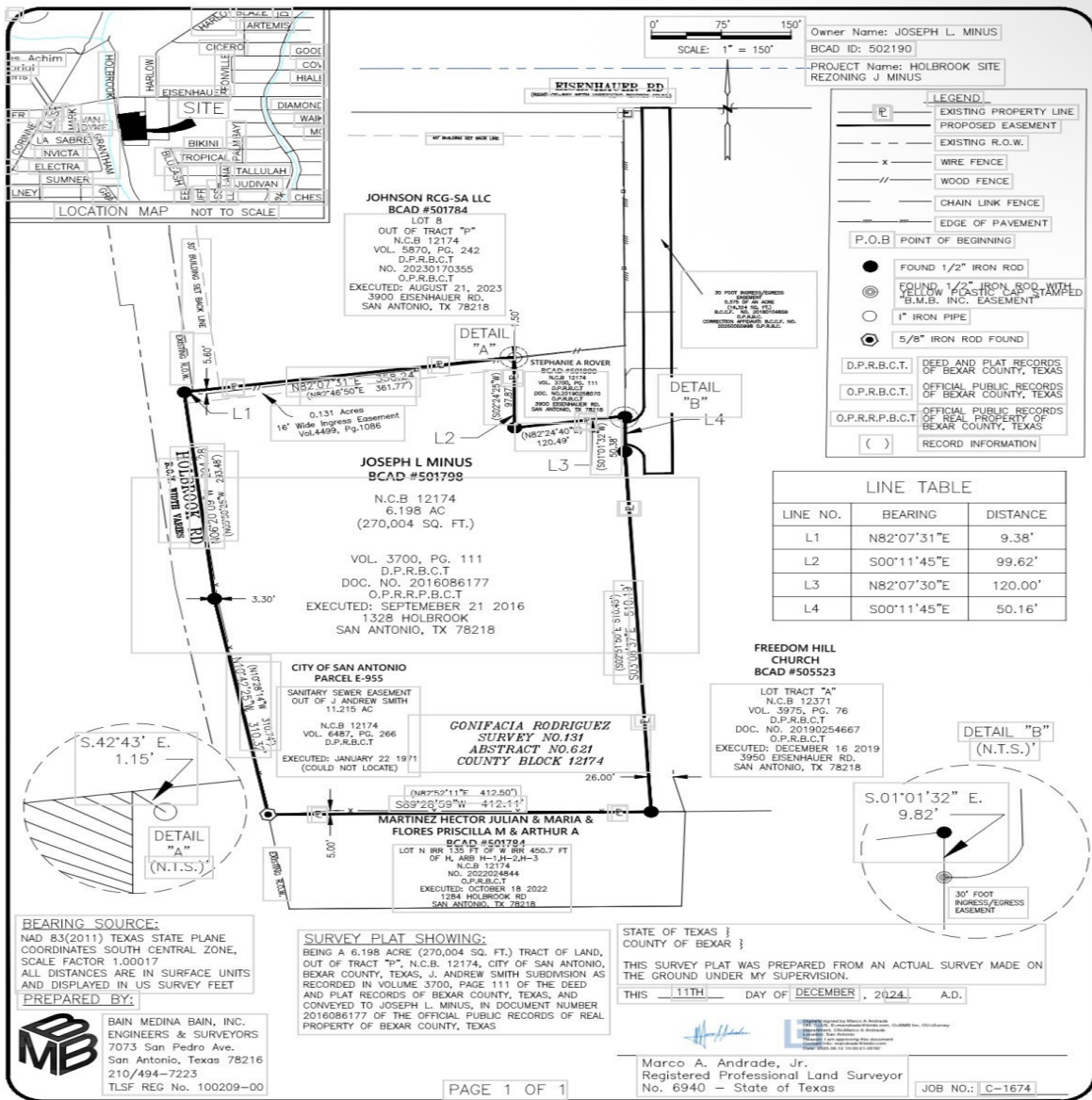


CENTURY 21[®]

Judge Fite Company



1328 HOLBROOK

SAN ANTONIO, TX 78218



\$1,440,000



0 sqft

DESCRIPTION

Rare opportunity! 6+ acres inside Loop 410. Currently zoned Commercial C-2, with opportunity to re-zone through the City of San Antonio. Current zoning should allow for various community commercial uses, such as theater, gas station, liquor store, sports training complex, other indoor gaming facilities, miniature golf, auto & light truck repair, oil lube & tune-up, dry cleaning, warehouse store, furniture, home & garden, strip center, among many other commercial possibilities. Plus the property is large enough (6+ Acres) to consider multiple commercial uses on site. Potential of other non community commercial possibilities through rezoning. Seller willing to help Buyer navigate potential rezoning process. Excellent location. Minutes to shopping, dining, medical, churches, schools, universities and trailheads. Minutes to major thoroughfares Loop 410, Interstate 35, Interstate 10, & Austin Hwy 368, 10 min from San Antonio International Airport. 10 min from Joint Base Fort Sam Houston. 15 min from downtown, the Riverwalk, and the Alamo. City water, city sewer, electricity run to property, but not currently metered. Existing emergency exit easement in place per City of San Antonio. Approximately 495 feet of optimal road frontage. West side of property partially located in 100 year flood plain. Approximately 4.46 acres completely out of flood plain. Opportunity abounds! Sky's the limit. If you build it, they will come.

PROPERTY TYPE: Commercial - Unimproved Land

MLS STATUS: Active

MLS: 21221746

YEAR BUILT: 2026

COUNTY: Bexar

TRACT OR SUBDIVIION: J Andrew Smith Sub P BI 12714

LIST DATE: 03/30/2026

CENTURY 21

Judge Fite Company

800.451.8055

AREA:

SQUARE FEET:

TOTAL BEDS:

FULL BATHS:

HALF BATHS:

ACRES: 6.2

LOT SIZE (SQFT): 269,984

INTERIOR FEATURES

VIRTUAL TOUR:

- [View virtual tour](#)

EXTERIOR FEATURES

LOT DESCRIPTION:

- Acreage
- Cleared
- BacksToGreenbeltPark
- Greenbelt
- Level
- FewTrees

SIDING:

- Other

UTILITIES

UTILITIES:

- ElectricityAvailable
- OverheadUtilities
- PhoneAvailable
- SewerAvailable
- WaterAvailable

LISTED BY: Tim Canterbury 

PHONE: 972.974.5713

ADDITIONAL PROPERTY DETAILS

BROKERED BY: Great Western Realty

century21judgefite.com

each office is independently owned and operated