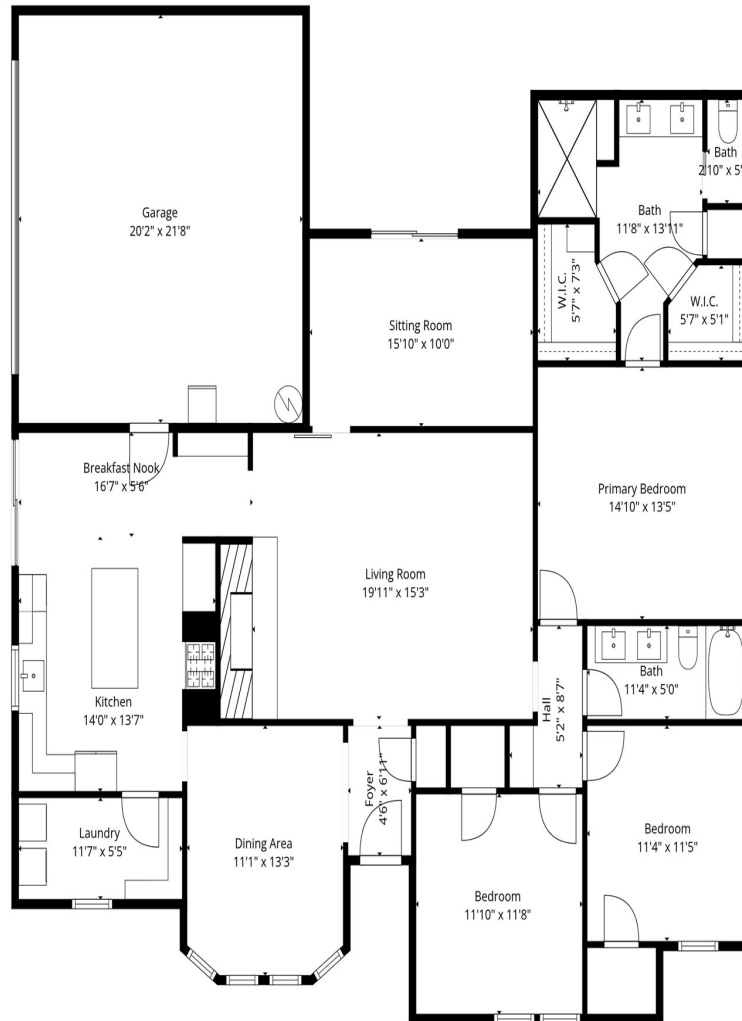


CENTURY 21[®]

Judge Fite Company



Measurements Calculated By Technology. They Aren't Guaranteed But Are Mostly Reliable

2924 SCENIC DRIVE

GRAPEVINE, TX 76051



\$685,000



2,010 sqft



3 beds



2 baths

DESCRIPTION

Gorgeous home in the Carrol ISD. This home has been completely updated, with new floors, bathrooms, windows. Includes a 15 X 12 addition. Extended drive that can fit both a both and an RV.

CENTURY 21

Judge Fite Company

800.451.8055

PROPERTY TYPE: Residential - Single Family Residence

MLS STATUS: Pending

MLS: 21215135

YEAR BUILT: 1983

COUNTY: Tarrant

TRACT OR SUBDIVIION: Trail Lake

LIST DATE: 03/22/2026

AREA:

SQUARE FEET: 2,010

TOTAL BEDS: 3

FULL BATHS: 2

HALF BATHS: 0

ACRES: 0.23

LOT SIZE (SQFT): 9,801

INTERIOR FEATURES

FIREPLACE:

- FamilyRoom
- WoodBurning

APPLIANCES:

- SomeGasAppliances
- BuiltInGasRange
- BuiltInRefrigerator
- Dishwasher
- Disposal
- Microwave
- PlumbedForGas
- Refrigerator

VIRTUAL TOUR:

- [View virtual tour](#)

EXTERIOR FEATURES

STYLE:

- Detached

PARKING:

- AdditionalParking
- Boat
- KitchenLevel
- RvAccessParking

SIDING:

- Brick

POOL TYPE:

- None

UTILITIES

UTILITIES:

- NaturalGasAvailable
- SewerAvailable
- SeparateMeters
- WaterAvailable
- CableAvailable

ADDITIONAL PROPERTY DETAILS

AMENITIES:

- DecorativeDesignerLightingFixtures
- EatInKitchen
- GraniteCounters
- HighSpeedInternet
- KitchenIsland
- CableTv

COMMUNITY:

- Curbs
-

LISTED BY: Lynn Ballester 

PHONE: 817.329.9005

BROKERED BY: Coldwell Banker Realty