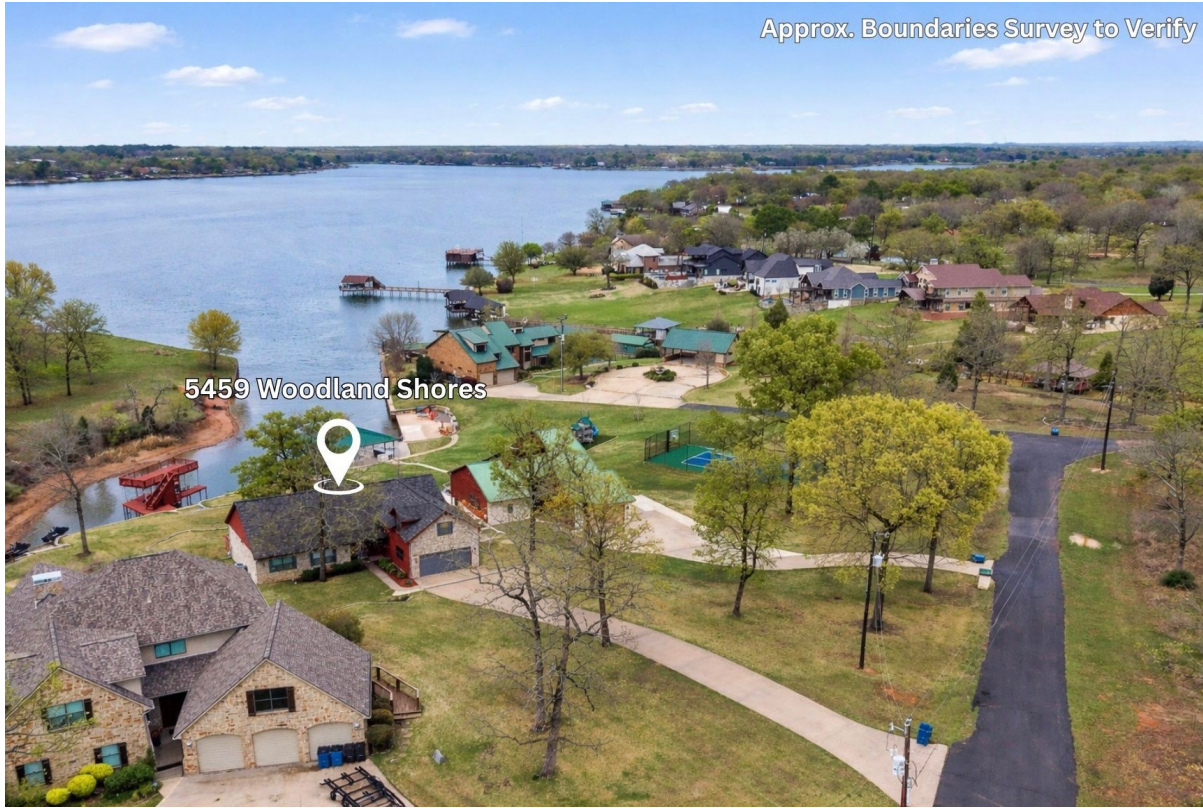


CENTURY 21[®]

Judge Fite Company



5459 WOODLAND SHORES DRIVE

LOG CABIN, TX 75148



\$899,000



2,674 sqft



4 beds



3 baths

DESCRIPTION

Tucked inside a sought-after gated community, this waterfront retreat sits on just over half an acre with mature trees, elevated open water views, and a rare combination of open water views and protected cove frontage. Inside, the home is designed for gathering—featuring vaulted ceilings, a stunning stone fireplace, and an open-concept layout that flows seamlessly from the living area to a beautifully updated kitchen. A large island is complemented by updated countertops, backsplash, fixtures, stainless steel appliances, and a double oven. Hickory engineered hardwood flooring adds warmth and character throughout the main living areas. The main level offers three bedrooms, including a peaceful waterside primary suite with a walk-in shower and generous closet space. Upstairs, a game room and bunk room create the perfect setup for hosting family and friends at the lake. Step outside and enjoy everything lake life is meant to be—whether you're relaxing on the spacious deck, entertaining under the sun sails, grilling on the flagstone patio, or spending the day on the water. Built-in speakers extend through the family room, back patio, deck, and lower garden, creating the perfect atmosphere for entertaining. The boathouse features a newly updated upper party deck, and major updates like a 2022 roof, 80-gallon hot water heater with vacation mode, and newer windows throughout offer peace of mind. A two-car garage and extra-long driveway provide ample parking for guests—ideal for weekends at the lake and entertaining. Conveniently located near The Dock restaurant—known for its incredible cuisine—and just minutes from downtown Malakoff, where you'll find local coffee shops, bookstores, boutiques, and antique stores. Whether you're looking for a weekend escape or a full-time lake home, this property delivers space, comfort, and the kind of setting that makes every day feel like a getaway.

PROPERTY TYPE: Residential - Single Family Residence

MLS STATUS: Active

MLS: 21204118

YEAR BUILT: 2000

COUNTY: Henderson

TRACT OR SUBDIVIION: Woodland Shores Estate

LIST DATE: 03/19/2026

CENTURY 21

Judge Fite Company

800.451.8055

AREA:

SQUARE FEET: 2,674

TOTAL BEDS: 4

FULL BATHS: 3

HALF BATHS: 0

ACRES: 0.57

LOT SIZE (SQFT): 24,829

INTERIOR FEATURES

FIREPLACE:

- Stone
- WoodBurning

FLOOR COVERINGS:

- Tile
- Wood

APPLIANCES:

- DoubleOven
- Dishwasher
- ElectricCooktop
- Disposal
- Microwave
- Refrigerator

VIRTUAL TOUR:

- [View virtual tour](#)

EXTERIOR FEATURES

STYLE: <ul style="list-style-type: none">● Ranch● Detached	PARKING: <ul style="list-style-type: none">● Concrete● DoorSingle● Driveway● Garage	LOT DESCRIPTION: <ul style="list-style-type: none">● Landscaped● Subdivision● SprinklerSystem● Waterfront● RetainingWall
ROOF TYPE: <ul style="list-style-type: none">● Composition	YARD/GROUNDS: <ul style="list-style-type: none">● BoatSlip● Dock	SIDING: <ul style="list-style-type: none">● Rock● Stone● WoodSiding
POOL TYPE: <ul style="list-style-type: none">● None	FOUNDATION: <ul style="list-style-type: none">● Slab	

UTILITIES

HEATING/COOLING: <ul style="list-style-type: none">● Central● Electric	UTILITIES: <ul style="list-style-type: none">● SewerAvailable● WaterAvailable
--	---

ADDITIONAL PROPERTY DETAILS

AMENITIES: <ul style="list-style-type: none">● DecorativeDesignerLightingFixtures● HighSpeedInternet● KitchenIsland● OpenFloorplan● VaultedCeilings	SECURITY FEATURES: <ul style="list-style-type: none">● FireAlarm● GatedCommunity
COMMUNITY: <ul style="list-style-type: none">● Lake● Gated	

LISTED BY: Debbie French 

PHONE: 903.340.8590

BROKERED BY: Ebby Halliday Realtors