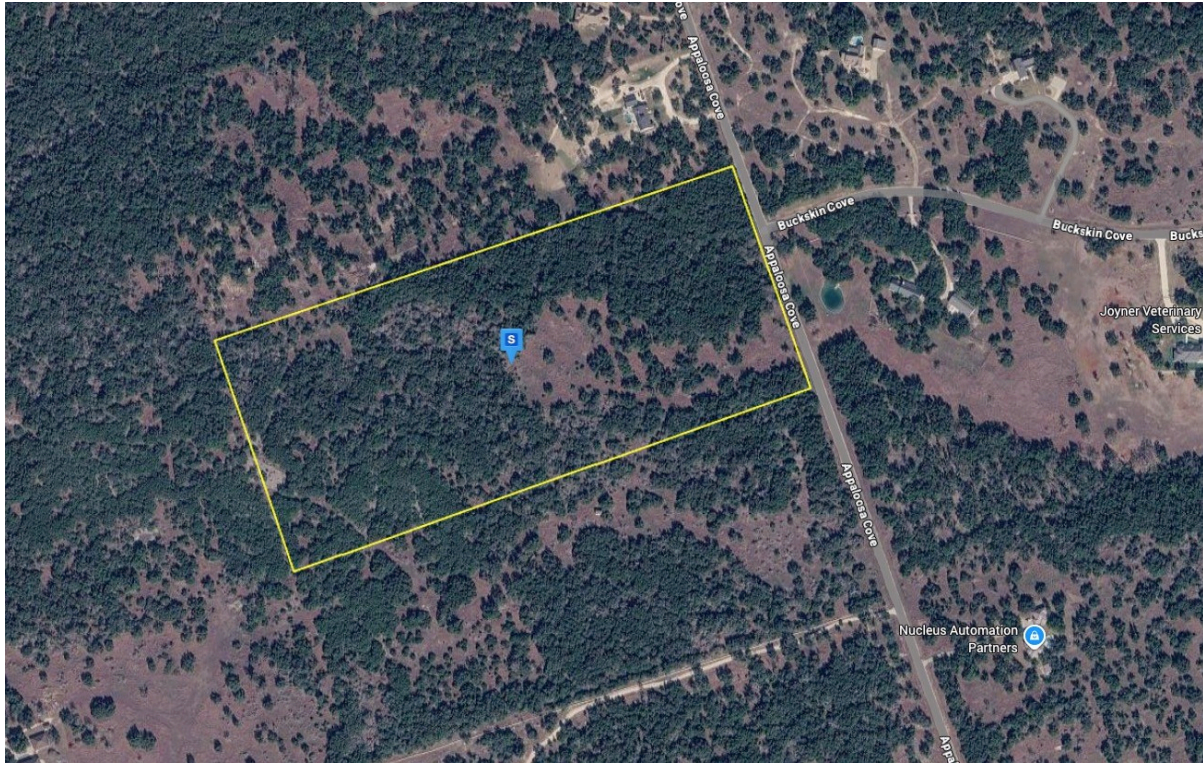


CENTURY 21[®]

Judge Fite Company



173 APPALOOSA COVE

JARRELL, TX 76537



\$659,999



1 acres

DESCRIPTION

This vacant lot offers an excellent opportunity to build your future home or make a smart investment. Situated in Spears Ranch On Salado Creek neighborhood, the property features 35.3 acres with wooded terrain. Well and septic are required. Enjoy a peaceful setting while remaining conveniently located near shopping, dining, schools, and major highways, providing easy access to city amenities. Whether you're looking for a private retreat, a development opportunity, or a long-term investment, this lot provides the flexibility and location to suit your needs. Listing is for land only and comes As Is.

PROPERTY TYPE: Land - Unimproved Land
MLS STATUS: Active
MLS: 21199311
YEAR BUILT:
COUNTY: Williamson
TRACT OR SUBDIVIION: Spears Ranch On Salado Creek Sec 01
LIST DATE: 03/05/2026

CENTURY 21

Judge Fite Company

800.451.8055

AREA:
SQUARE FEET:
TOTAL BEDS:
FULL BATHS:
HALF BATHS:
ACRES: 35.37
LOT SIZE (SQFT): 1,540,760

INTERIOR FEATURES

VIRTUAL TOUR:

- [View virtual tour](#)

EXTERIOR FEATURES

LOT DESCRIPTION:

- RollingSlope

UTILITIES

UTILITIES:

- None

ADDITIONAL PROPERTY DETAILS

LISTED BY: Joel Hinckley 

BROKERED BY: PlatLabs, LLC