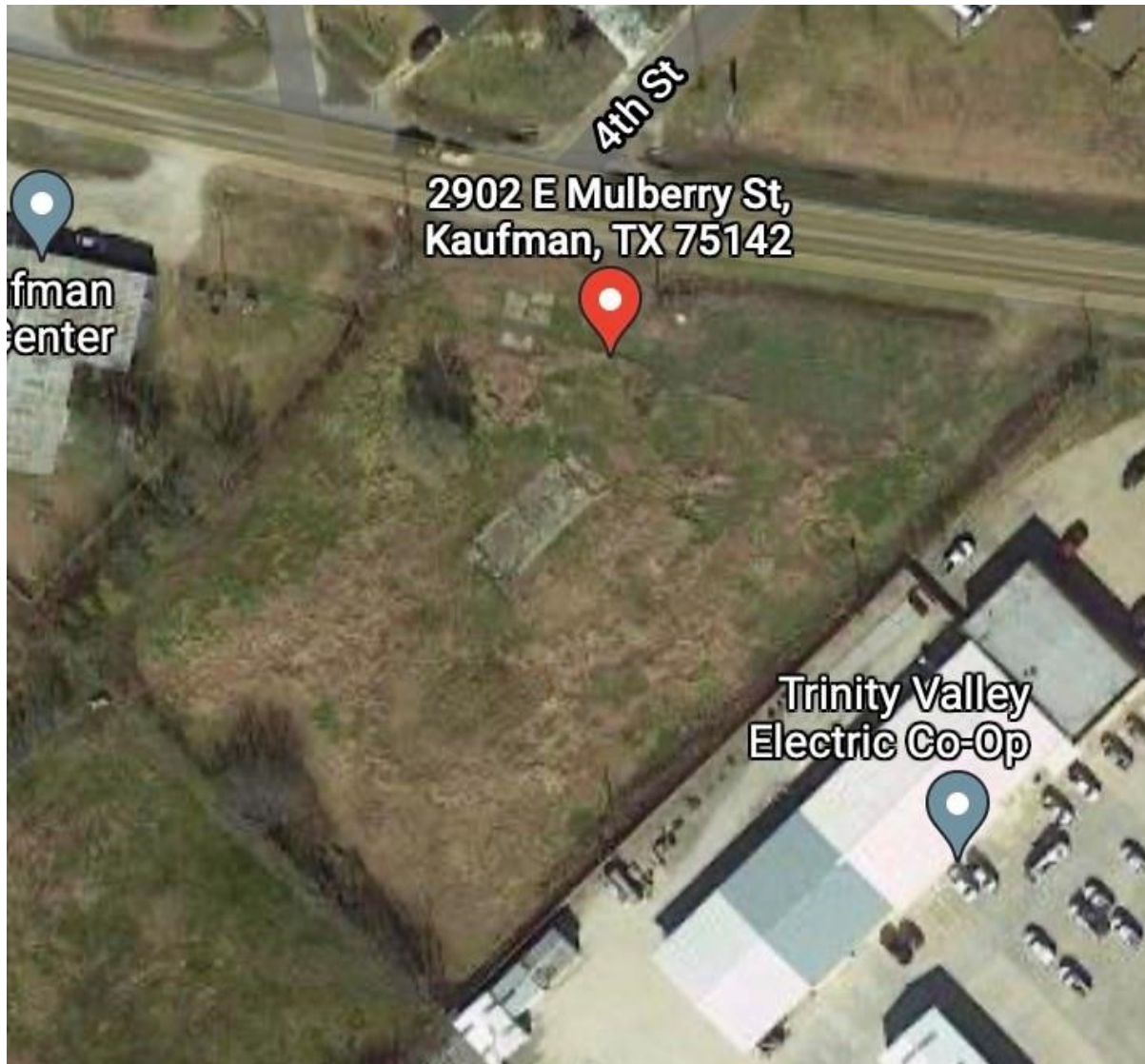


CENTURY 21

Judge Fite Company



2902 MULBERRY STREET

KAUFMAN, TX 75142



\$744,000



0 sqft

DESCRIPTION

Prime commercial property near the high traffic intersection of Hwy 34 bypass. 2+ acres with many business possibilities. Great location to bring your business.

CENTURY 21

Judge Fite Company

800.451.8055

PROPERTY TYPE: Commercial - Unimproved Land

MLS STATUS: Active

MLS: 21181898

YEAR BUILT:

COUNTY: Kaufman

TRACT OR SUBDIVIION: Cottage Heights

LIST DATE: 02/16/2026

AREA:

SQUARE FEET:

TOTAL BEDS:

FULL BATHS:

HALF BATHS:

ACRES: 2.13

LOT SIZE (SQFT): 93,000

EXTERIOR FEATURES

LOT DESCRIPTION:

- Acreage
- IrregularLot

UTILITIES

UTILITIES:

- ElectricityConnected
- SewerAvailable
- WaterAvailable

ADDITIONAL PROPERTY DETAILS

LISTED BY: Beverly Davis 

PHONE: 972.962.2110

BROKERED BY: Elsie Halbert Real Estate, LLC

century21judgefite.com

each office is independently owned and operated