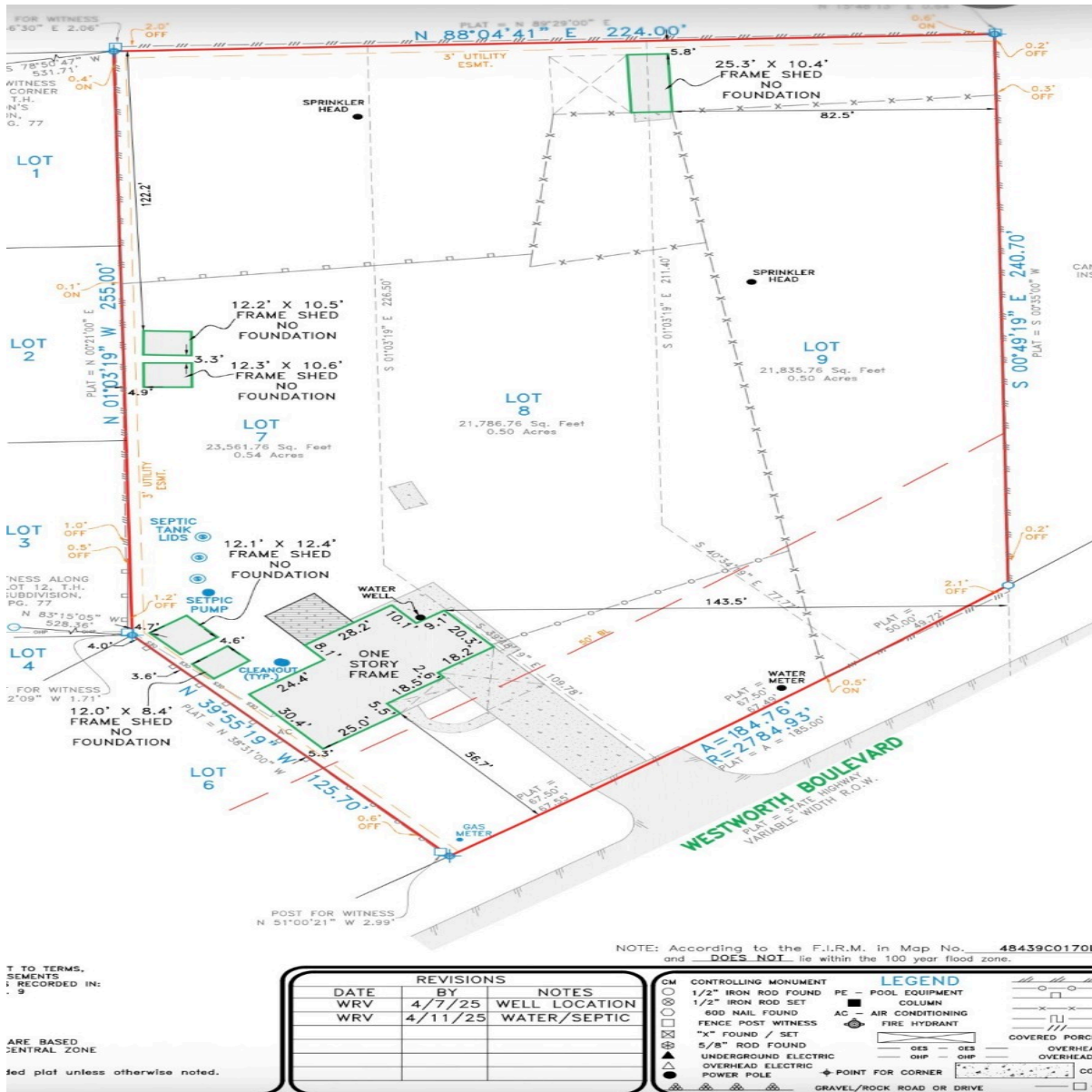


CENTURY 21

Judge Fite Company



5816 WESTWORTH BOULEVARD

WESTWORTH VILLAGE, TX 76114



\$1,300,000



1 acres

DESCRIPTION

Fantastic Investment Opportunity! This remarkable property is perfect for builders or developers eager to leverage the high demand for new housing in the area. With outstanding visibility, the property holds significant value, thanks to its land and prime access along Westworth Boulevard, offering both north and south bound access points and design flexibility. This listing includes three contiguous plats totaling 1.5 acres: 5808, 5812, and 5816 Westworth Blvd., available for sale as a package. Located just minutes from Shady Oaks Country Club, Trinity Trails, and a variety of vibrant retail and dining options, this property is situated in one of Tarrant County's most desirable and rapidly developing areas. Please note that aerial images are unavailable due to the proximity of the Naval Air Station. Bring your vision and come see this unique investment opportunity today !

PROPERTY TYPE: Land - Improved Land
MLS STATUS: Active
MLS: 21161678
YEAR BUILT:
COUNTY: Tarrant
TRACT OR SUBDIVIION: Aubrey Place
LIST DATE: 01/24/2026

CENTURY 21

Judge Fite Company

800.451.8055

AREA:
SQUARE FEET:
TOTAL BEDS:
FULL BATHS:
HALF BATHS:
ACRES: 1.5
LOT SIZE (SQFT): 65,340

INTERIOR FEATURES

VIRTUAL TOUR:

- [View virtual tour](#)

EXTERIOR FEATURES

LOT DESCRIPTION:

- Acreage
- CityLot

UTILITIES

UTILITIES:

- ElectricityAvailable
- SepticAvailable
- WaterAvailable

ADDITIONAL PROPERTY DETAILS

LISTED BY: Celissa Irizarry 

PHONE: 682.410.7716

BROKERED BY: Corey Simpson & Associates