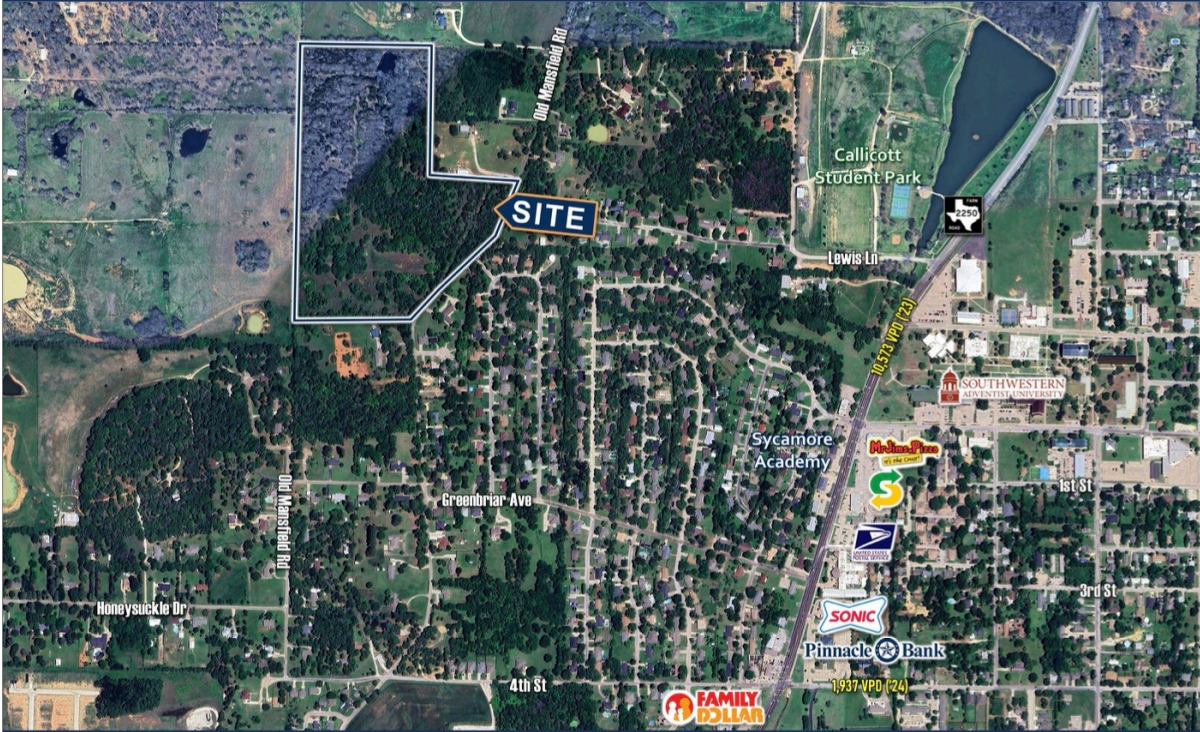


CENTURY 21[®]

Judge Fite Company

±36 ACRE FOR SALE
KEENE, TX



MIKE SMITH
630.207.6569
msmith@airstreamrealty.com

CHRISTIAN KONDRATUK
214.864.9440
christiank@airstreamrealty.com

104 S OLD MANSFIELD ROAD

KEENE, TX 76059



\$1,248,000



1 acres

DESCRIPTION

±35.68 ac Cleburne, TX -Size: 35.68 acres -Zoning: City Of Keene ETJ -Price: \$1,248,800 - 1,100 Feet of Frontage along Old Mansfield Rd. - Keene, Texas, is experiencing steady growth, with a projected population of 7,145 in 2025, reflecting an annual growth rate of approximately 2.04% since 2020. The city is witnessing various residential developments - Notable residential projects include communities like Ashton Homeplace by Lennar, The Canyons by D.R. Horton, Sunset Ridge by D.R. Horton, Bristol Oaks by John Houston Homes, Greenbriar Meadows, Heritage Oaks, and more. These developments contribute to Keene's evolving landscape, enhancing its appeal as a growing North Texas community. -The near city of Cleburne, Texas (±1.7mi East), is experiencing rapid growth with a population of 37,792 (as of 2024) and a growth rate of over 4.3% per year. The city is experiencing numerous residential, commercial, and industrial developments, including a 1.7 million square foot Amazon facility, Olive Garden, HTeaO, Atwood's Ranch and Home, and more. With over 10,400 residential units under development, including 7,194 single-family homes and over 3,200 multi-family units, Cleburne is a thriving and expanding city. Read more regarding the Amazon facility here

PROPERTY TYPE: Land - Unimproved Land

MLS STATUS: Active

MLS: 21159659

YEAR BUILT:

COUNTY: Johnson

TRACT OR SUBDIVIION: Pennington

LIST DATE: 01/22/2026

CENTURY 21

Judge Fite Company

800.451.8055

AREA:

SQUARE FEET:

TOTAL BEDS:

FULL BATHS:

HALF BATHS:

ACRES: 35.68

LOT SIZE (SQFT): 1,554,220

INTERIOR FEATURES

VIRTUAL TOUR:

- [View virtual tour](#)

EXTERIOR FEATURES

LOT DESCRIPTION:

- Acreage

UTILITIES

UTILITIES:

- None

ADDITIONAL PROPERTY DETAILS

LISTED BY: Michael Smith 

BROKERED BY: Airstream Realty LLC

century21judgefite.com

each office is independently owned and operated