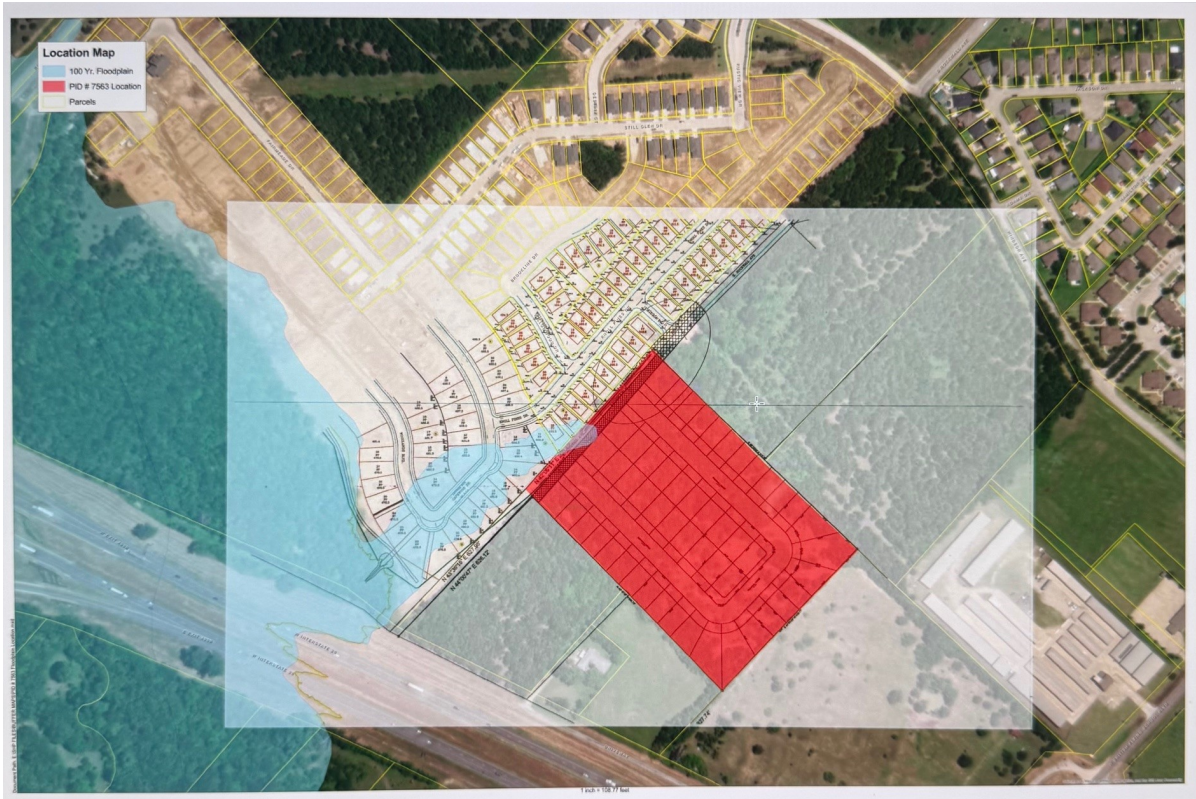


# CENTURY 21<sup>®</sup>

Judge Fite Company



## 2578 FM RD 2578 ROAD

TERRELL, TX 75160



\$1,300,000



1 acres

## DESCRIPTION

Lot of 13.057 acres inside of the City limits with authorization of re-zoning for Single Family Residential lots. Approval to built 43 homes in lots subdivided of 7500 sq.ft. This project requires the preparation of Engineer Floor plans to obtain City permits for Construction. In MLS documents attached you will find the Floor Plans and Renders of the 2 Model Homes that the City approved to built in this development.

**CENTURY 21**

Judge Fite Company

**800.451.8055**

**PROPERTY TYPE:** Land - Unimproved Land

**MLS STATUS:** Active

**MLS:** 21146394

**YEAR BUILT:**

**COUNTY:** Kaufman

**TRACT OR SUBDIVIION:** JNO C Hale, Tract 75.00: 13.057 Acres

**LIST DATE:** 04/23/2026

**AREA:**

**SQUARE FEET:**

**TOTAL BEDS:**

**FULL BATHS:**

**HALF BATHS:**

**ACRES:** 13.06

**LOT SIZE (SQFT):** 568,762

## INTERIOR FEATURES

**VIRTUAL TOUR:**

- [View virtual tour](#)

## EXTERIOR FEATURES

**LOT DESCRIPTION:**

- Acreage
- CityLot

## UTILITIES

**UTILITIES:**

- ElectricityAvailable
- SewerAvailable
- WaterAvailable

## ADDITIONAL PROPERTY DETAILS

**COMMUNITY:**

- CommunityMailbox

**LISTED BY:** Jessica Hernandez 

**PHONE:** 972.983.7500

**BROKERED BY:** H&O Investments, Inc

century21judgefite.com

each office is independently owned and operated