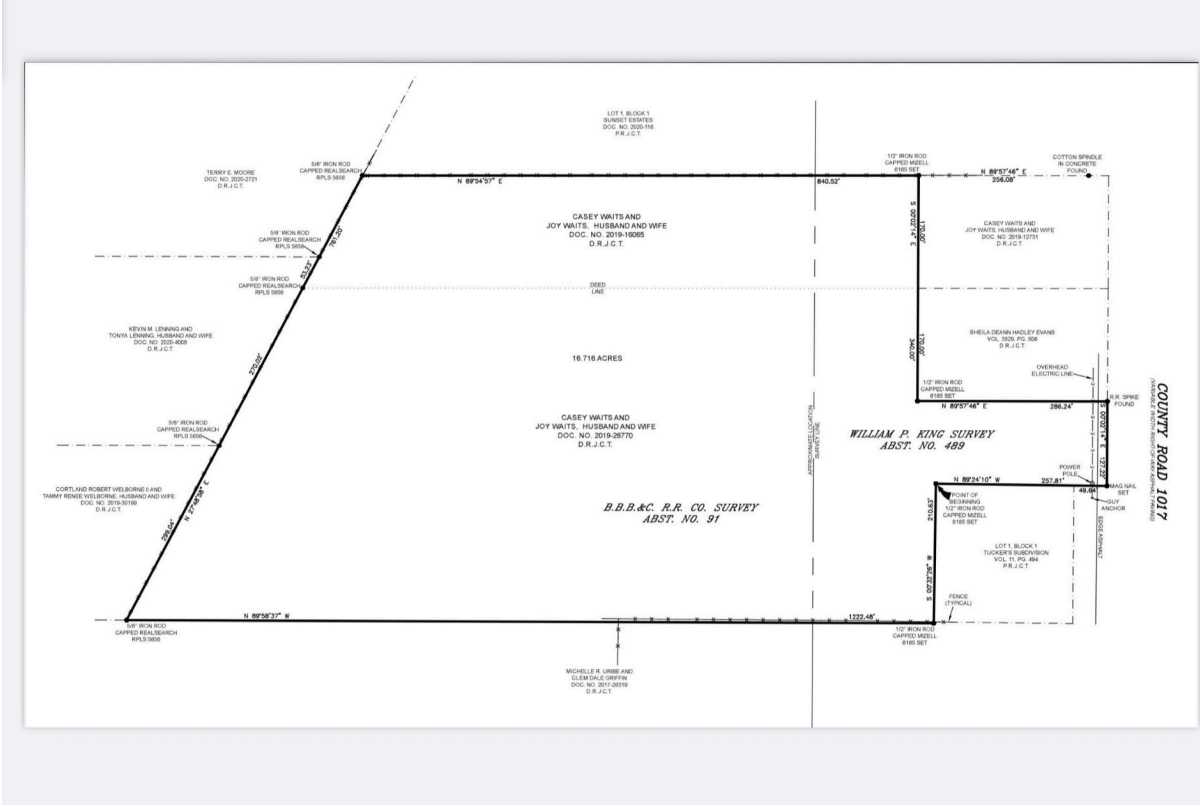


CENTURY 21®

Judge Fite Company



6221 COUNTY ROAD 1017

JOSHUA, TX 76058



\$1,618,000



1 acres

DESCRIPTION

Fantastic 16.716 acres with additional lots for total of 20+- acres in the sought-after Godley ISD and near Chisholm Trail. This 20+- acres has endless possibilities from development to ranch living. Listing price reflects price for all 20+- acres. Electric and water available. Property includes a small 1144 sqft framed home. Also, has large metal storage structure located on right side of property. Survey Plats available.

CENTURY 21

Judge Fite Company

800.451.8055

PROPERTY TYPE: Land - Improved Land

MLS STATUS: Active

MLS: 21127543

YEAR BUILT:

COUNTY: Johnson

TRACT OR SUBDIVIION: Abst 489 TR 5 WP King

LIST DATE: 12/08/2025

AREA:

SQUARE FEET:

TOTAL BEDS:

FULL BATHS:

HALF BATHS:

ACRES: 16.72

LOT SIZE (SQFT): 728,148

EXTERIOR FEATURES

LOT DESCRIPTION:

- Acreage
- Cleared
- InteriorLot
- IrregularLot

YARD/GROUNDS:

- Other

UTILITIES

UTILITIES:

- CableAvailable
- ElectricityAvailable
- SepticAvailable
- WaterAvailable

ADDITIONAL PROPERTY DETAILS

LISTED BY: Joni Mckee 

PHONE: 817.690.2377

BROKERED BY: Joni Alexander-McKee, Broker

century21judgefite.com

each office is independently owned and operated