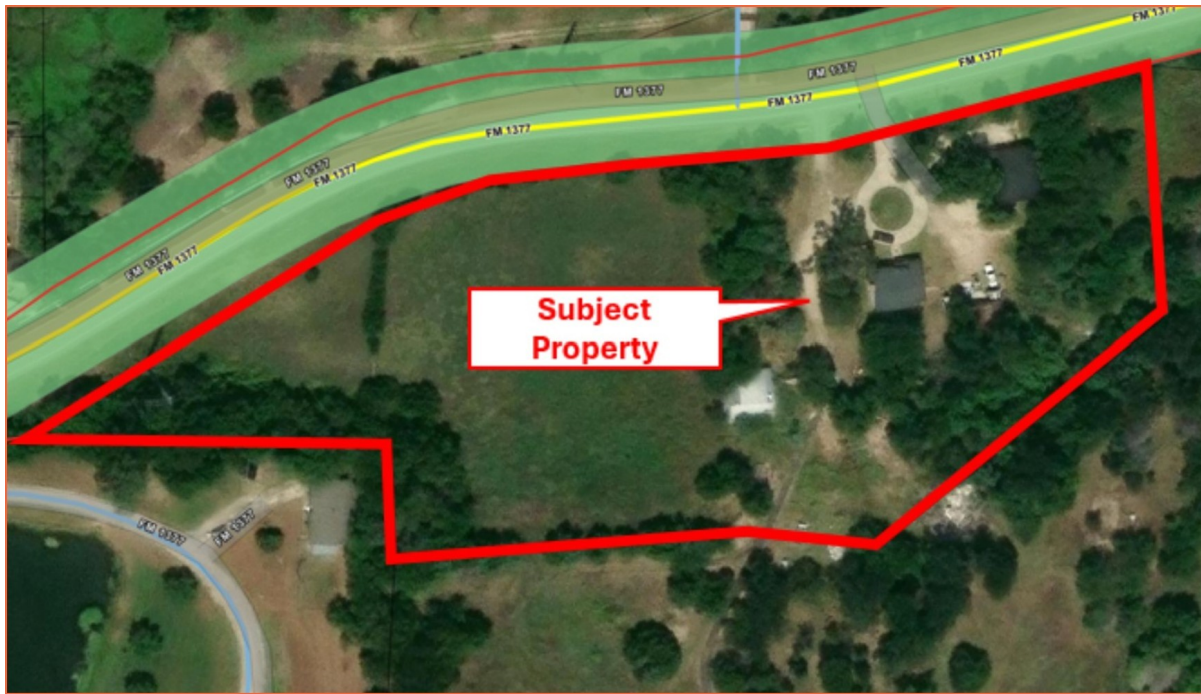


# CENTURY 21

Judge Fite Company



991 FM 1377  
PRINCETON, TX 75407



\$2,700,000



1 acres

## DESCRIPTION

4.8 acres of opportunity in one of the fastest growing cities in Collin County—Princeton, Texas. Located along FM 1377, this land offers valuable road frontage, strong accessibility, and excellent development potential. Whether you're a small developer, investor, or owner user, the property offers flexible potential: residential, small-scale commercial, or build-to-suit. This location is perfectly positioned for long-term value.

**CENTURY 21**

Judge Fite Company

**800.451.8055**

**PROPERTY TYPE:** Land - Improved Land

**MLS STATUS:** Active

**MLS:** 21126678

**YEAR BUILT:**

**COUNTY:** Collin

**TRACT OR SUBDIVIION:** David Cherry Surv Abs #166

**LIST DATE:** 12/06/2025

**AREA:**

**SQUARE FEET:**

**TOTAL BEDS:**

**FULL BATHS:**

**HALF BATHS:**

**ACRES:** 4.87

**LOT SIZE (SQFT):** 212,093

## INTERIOR FEATURES

**VIRTUAL TOUR:**

- [View virtual tour](#)

## EXTERIOR FEATURES

**LOT DESCRIPTION:**


- Other

## UTILITIES

**UTILITIES:**

- Other
- SewerAvailable
- WaterAvailable

## ADDITIONAL PROPERTY DETAILS

**LISTED BY:** Enrique Arjona 

**PHONE:** 972.982.2442

**BROKERED BY:** RDE Capital Group, LLC

century21judgefite.com

each office is independently owned and operated