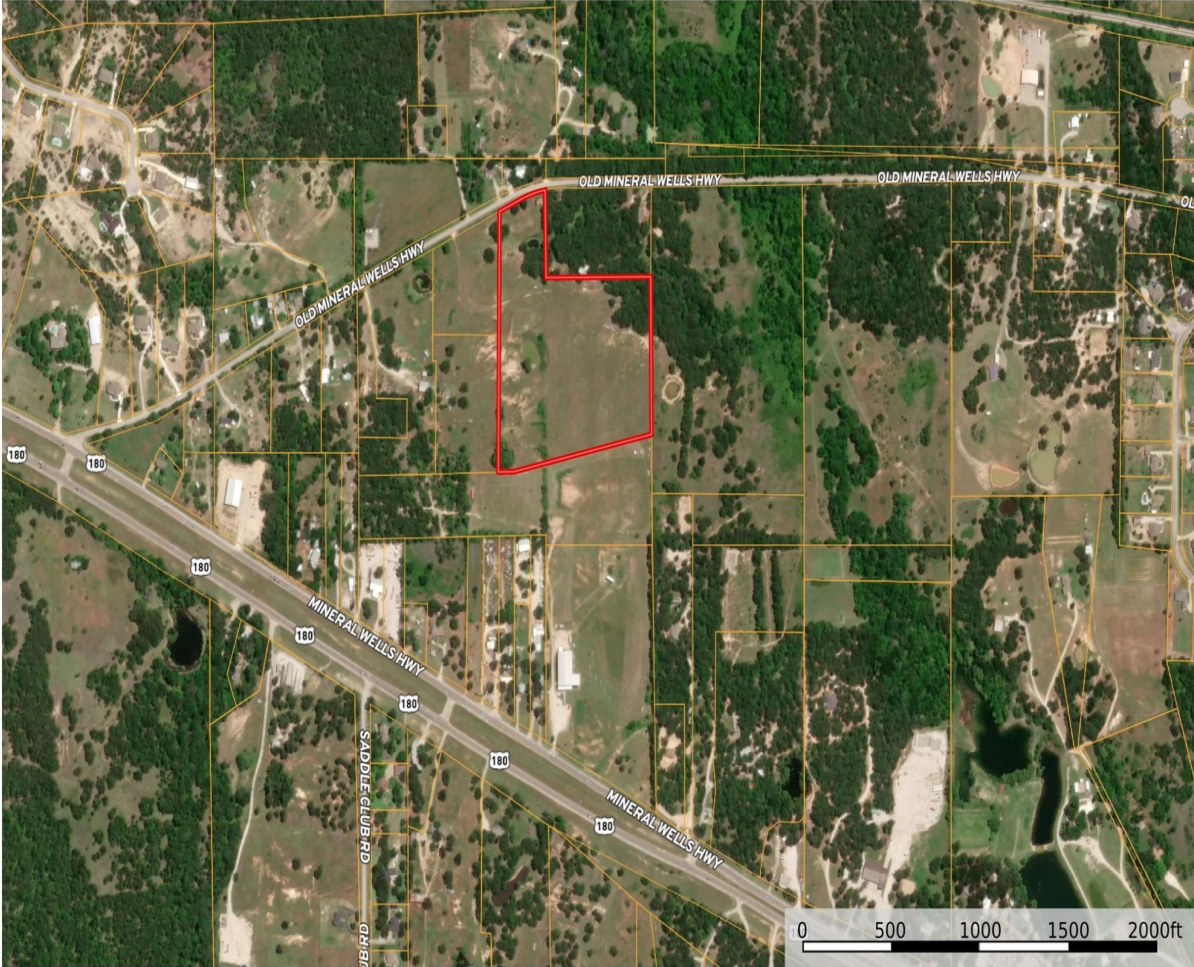


CENTURY 21

Judge Fite Company

Texas, AC +/-



Boundary

Alyssa Hughes

The information contained herein was obtained from sources deemed to be reliable. Land id™ Services makes no warranties or guarantees as to the completeness or accuracy thereof.

3321 OLD MINERAL WELLS HIGHWAY WEATHERFORD, TX 76088



\$779,625



0 sqft

DESCRIPTION

MULTIPLE APPLICATION PROPERTY - Approximately 275 feet of frontage on Old Mineral Wells Highway. Potential applications are RV park, ranchette with locations to build primary home, barn, etc. Also has the potential to build 8 two acre homesites. Has small stock pond and back portion of the tract is approximately 850 feet wide. Partially treed...gentle sloping from West to East. No useable structures onsite.

CENTURY 21

Judge Fite Company

800.451.8055

PROPERTY TYPE: Commercial - Unimproved Land

MLS STATUS: Active

MLS: 21108827

YEAR BUILT: 2021

COUNTY: Parker

TRACT OR SUBDIVIION: J B Jones Tract

LIST DATE: 11/11/2025

AREA:

SQUARE FEET:

TOTAL BEDS:

FULL BATHS:

HALF BATHS:

ACRES: 17.32

LOT SIZE (SQFT): 754,328

INTERIOR FEATURES

VIRTUAL TOUR:

- [View virtual tour](#)

EXTERIOR FEATURES

LOT DESCRIPTION:

- IrregularLot
- FewTrees

SIDING:

- Other

UTILITIES

UTILITIES:

- ElectricityAvailable
- OverheadUtilities

ADDITIONAL PROPERTY DETAILS

LISTED BY: Jim Martin 

PHONE: 817.441.2255

BROKERED BY: Railhead Realty, LLC

century21judgefite.com

each office is independently owned and operated