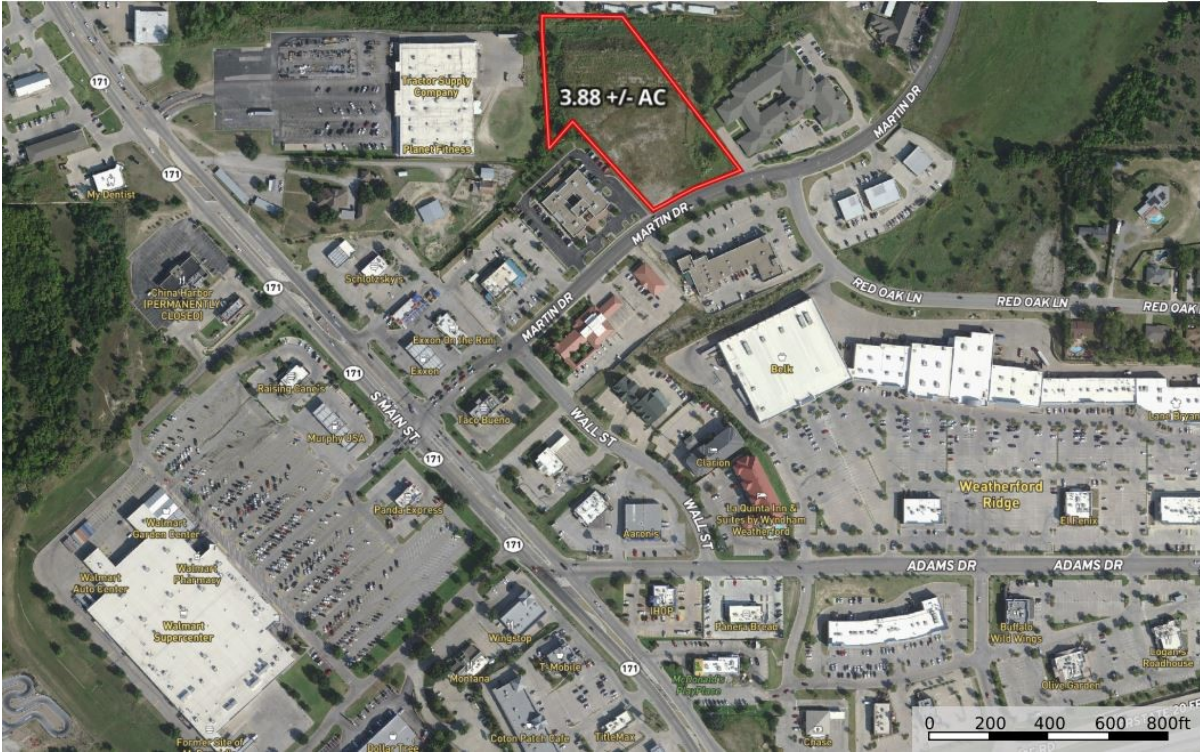


CENTURY 21®

Judge Fite Company



MARTIN DRIVE WEATHERFORD, TX 76086



\$1,436,609



0 sqft

DESCRIPTION

HIGH TRAFFIC Commercial lot of approximately 169,000 sq. ft. Immediately surrounding area features Restaurants...Fine Dining and Fast Food, Convenience Stores, Senior Living, Office Buildings, Banks, Department Stores, Starbucks, and an ultra high traffic Walmart. Home Depot, Lowes, Target, Best Buy, and several other retail stores are less than one mile away. Nicely dimensioned lot with accommodating topography.

CENTURY 21

Judge Fite Company

800.451.8055

PROPERTY TYPE: Commercial - Unimproved Land

MLS STATUS: Active

MLS: 21097529

YEAR BUILT:

COUNTY: Parker

TRACT OR SUBDIVIION: Southpark Add

LIST DATE: 10/28/2025

AREA:

SQUARE FEET:

TOTAL BEDS:

FULL BATHS:

HALF BATHS:

ACRES: 3.88

LOT SIZE (SQFT): 169,012

EXTERIOR FEATURES

LOT DESCRIPTION:

- IrregularLot

UTILITIES

UTILITIES:

- SewerAvailable
- WaterAvailable

ADDITIONAL PROPERTY DETAILS

COMMUNITY:

- Curbs

LISTED BY: Ron Hughes 

PHONE: 817.441.2255

BROKERED BY: RAILHEAD REALTY, LLC

century21judgefite.com

each office is independently owned and operated