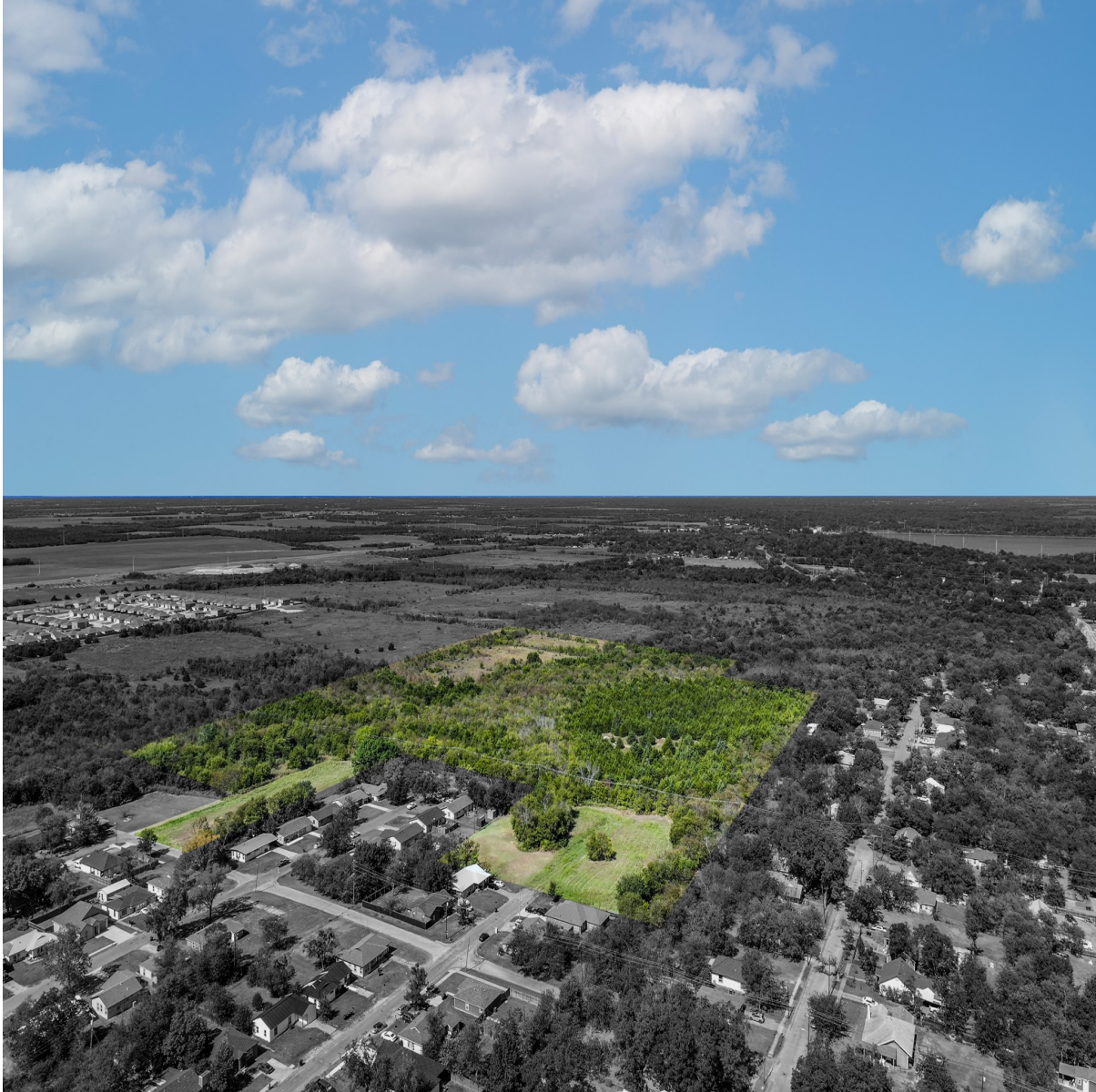


CENTURY 21[®]

Judge Fite Company



1500 WELLINGTON STREET

GREENVILLE, TX 75401



\$1,200,000



1 acres

DESCRIPTION

Beautiful 26.38-acre tract located in Greenville, Texas — an incredible opportunity for residential development in one of the area's fastest-growing corridors. Zoned for single-family homes, this property is already platted into 24 individual lots along College Street, Wellington Street, and Langford Street, ranging in size from approximately 0.17 acres to over 15 acres. This diverse layout offers flexibility for various home types or phased development. All major utilities are available on-site, including city water, septic, gas, and electric. Conveniently located just one mile from the intersection of US-69 and US-380, residents will enjoy easy access to nearby shopping, dining, and major highways while still experiencing a peaceful, suburban setting. With over three access points and no floodplain impact, this land is ready for efficient site design and build-out. Whether you're a builder ready to create a new community or an investor seeking long-term growth potential, this property provides the perfect blend of location, infrastructure, and opportunity.

PROPERTY TYPE: Land - Unimproved Land
MLS STATUS: Active
MLS: 21088709
YEAR BUILT:
COUNTY: Hunt
TRACT OR SUBDIVISION: Sayle Drive Add
LIST DATE: 10/20/2025

CENTURY 21

Judge Fite Company

800.451.8055

AREA:
SQUARE FEET:
TOTAL BEDS:
FULL BATHS:
HALF BATHS:
ACRES: 25
LOT SIZE (SQFT): 1,089,000

INTERIOR FEATURES

VIRTUAL TOUR:

- [View virtual tour](#)

EXTERIOR FEATURES

LOT DESCRIPTION:

- Acreage
- Level

UTILITIES

UTILITIES:

- ElectricityAvailable
- NaturalGasAvailable
- SepticAvailable
- SeparateMeters
- WaterAvailable

ADDITIONAL PROPERTY DETAILS

LISTED BY: Shane Hendrix 

BROKERED BY: M&D CRE, LLC

century21judgefite.com

each office is independently owned and operated