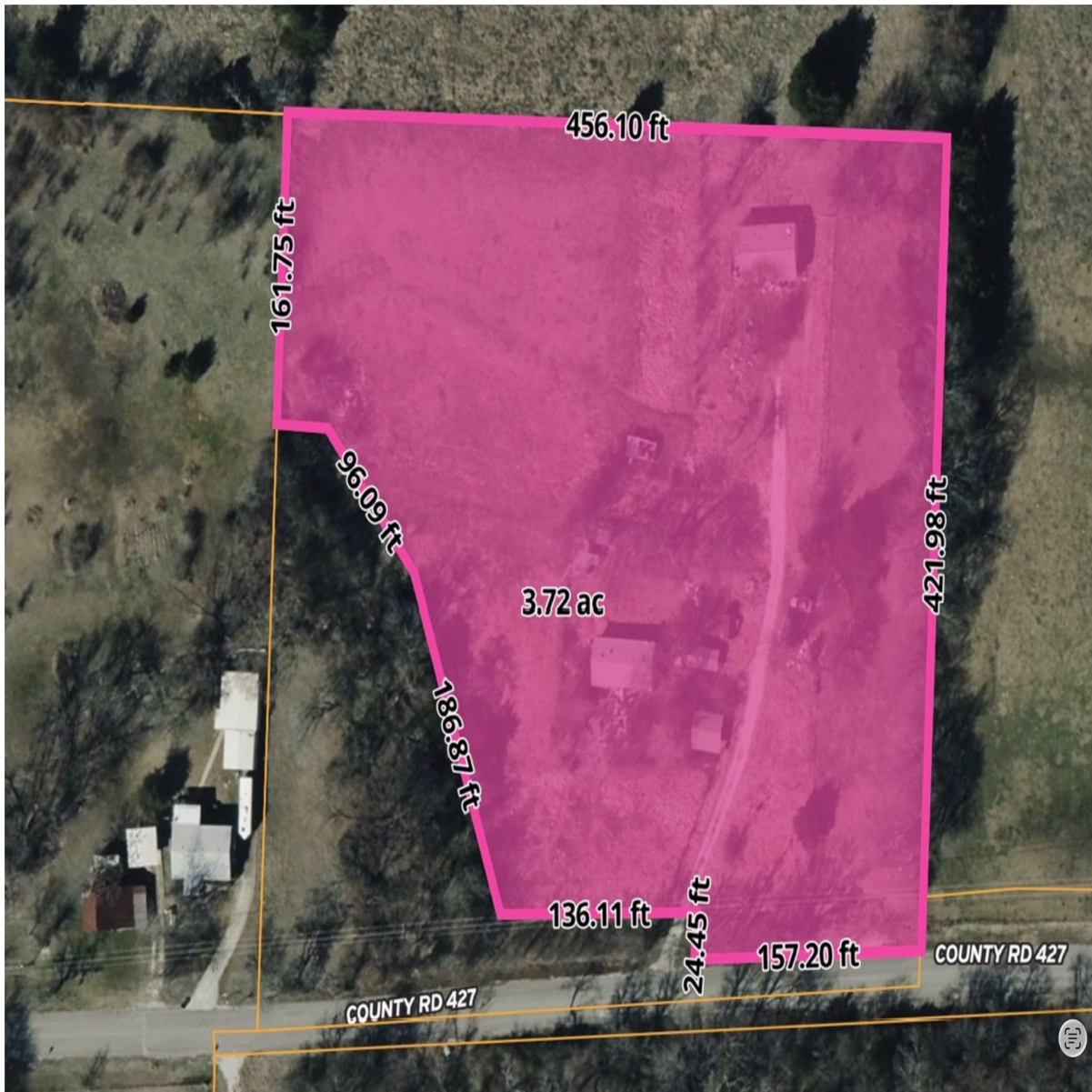


CENTURY 21

Judge Fite Company



2701 CR-427

ANNA, TX 75409



\$510,000



1 acres

DESCRIPTION

PRICE IMPROVEMENT! 4 Acre property with existing improvements including two manufactured homes (not repairable), two septic systems, storm cellar, and serviced by South Grayson Water. Offers plenty of space and flexibility for a variety of uses. Located near Sherley Farms development. The property includes a blanket easement held by Collin County Soil & Water Conservation District, portions of the land at 680 Ft evaluation and above may qualify for removal increasing the useable area. Topography Survey is required, and evaluation adjustments such as adding or regrading soil may provide additional options for removal.

PROPERTY TYPE: Land - Improved Land
MLS STATUS: Active
MLS: 21040978
YEAR BUILT:
COUNTY: Collin
TRACT OR SUBDIVIION: ABS A0559 GUINNESS MORRISON SURVEY
LIST DATE: 08/27/2025

CENTURY 21

Judge Fite Company

800.451.8055

AREA:
SQUARE FEET:
TOTAL BEDS:
FULL BATHS:
HALF BATHS:
ACRES: 4
LOT SIZE (SQFT): 174,240

INTERIOR FEATURES

VIRTUAL TOUR:

- [View virtual tour](#)

EXTERIOR FEATURES

STYLE:

- Barndominium

LOT DESCRIPTION:

- Acreage

FENCING:

- BarbedWire

UTILITIES

UTILITIES:

- ElectricityAvailable
- ElectricityConnected
- SepticAvailable
- WaterAvailable

ADDITIONAL PROPERTY DETAILS

LISTED BY: Victor Villanueva 

PHONE: 972.381.6121

BROKERED BY: Bill Kukla Realty