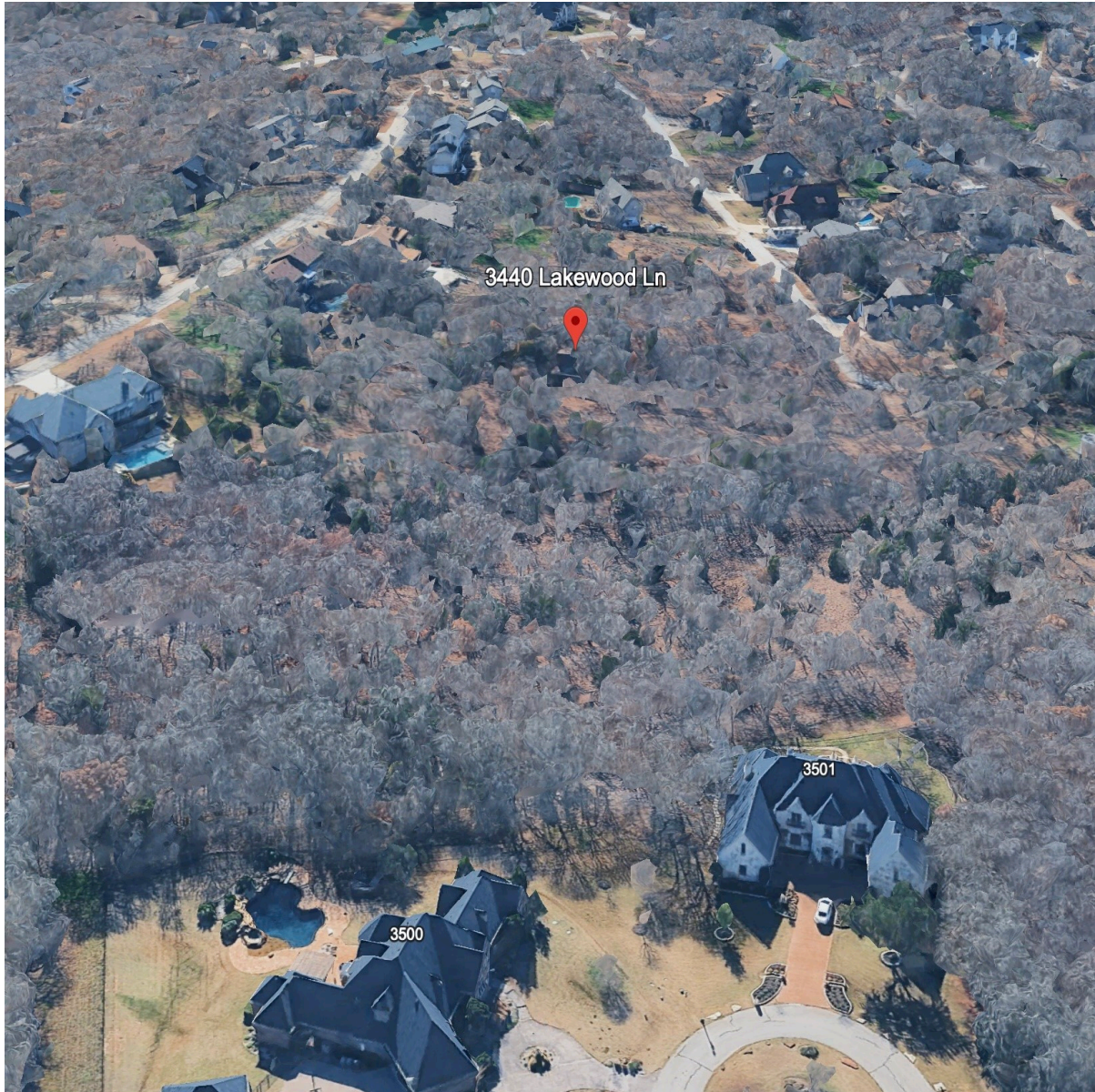


CENTURY 21

Judge Fite Company



3440 LAKEWOOD LANE

FLOWER MOUND, TX 75022



\$650,000



0 sqft



0 beds



0 baths

DESCRIPTION

No HOA 1.8+ acre land in Flower Mound with significant improvement of a 10' foot dirt drive has been cut in around the entire perimeter, opening access and showcasing the land's remarkable topography. With the improved visibility, a couple of prime build sites have been revealed each offering unique potential, including one elevated location where, if designed thoughtfully, capture lake views of the north end of Lake Grapevine and skyline horizons. Tucked within the picturesque Franklin Hills neighborhood, with its park-like feel, 3440 Lakewood Lane is a rare opportunity to own a prime residential lot in one of Flower Mound's most beloved non-HOA communities. This spacious, tree-lined property offers a peaceful retreat just minutes from Grapevine Lake. If you're looking for a neighborhood that combines space, privacy, freedom, natural beauty, and community charm, Franklin Hills checks every box. Rich in natural amenities difficult to find in North Texas, from rolling hills and mature trees to developed trails, Franklin Hills creates an active and friendly lakeside community. Perfect for hiking, biking, horseback riding, or simply soaking in Texas sunsets by the lake, it's a retreat from the fast pace yet close to everything that makes Flower Mound one of the most desirable places to live in North Texas. Convenience without congestion. Whether you're looking to design a forever home or invest in one of the last remaining lots in this sought-after neighborhood, this property now offers even more compelling reasons to act unmatched freedom, privacy, lifestyle, and now, enhanced build opportunities. Just minutes to I-35E and FM 1171, with easy access to DFW Airport, major retail, dining, and recreational amenities.

PROPERTY TYPE: Residential - Single Family Residence

MLS STATUS: Active

MLS: 21023170

YEAR BUILT: 1987

COUNTY: Denton

TRACT OR SUBDIVISION: Franklin Hills

LIST DATE: 08/07/2025

CENTURY 21

Judge Fite Company

800.451.8055

AREA:

SQUARE FEET:

TOTAL BEDS: 0

FULL BATHS: 0

HALF BATHS: 0

ACRES: 1.85

LOT SIZE (SQFT): 80,586

INTERIOR FEATURES

VIRTUAL TOUR:

- [View virtual tour](#)

EXTERIOR FEATURES

STYLE:

- Detached

PARKING:

- AdditionalParking

LOT DESCRIPTION:

- RollingSlope
- Subdivision

POOL TYPE:

- None

FENCING:

- ChainLink

UTILITIES

UTILITIES:

- ElectricityAvailable
- SepticAvailable
- WaterAvailable

ADDITIONAL PROPERTY DETAILS

AMENITIES:

- Other
-

LISTED BY: Kye Fadeley 

PHONE: 469.223.2996

BROKERED BY: Lake Homes Realty, LLC