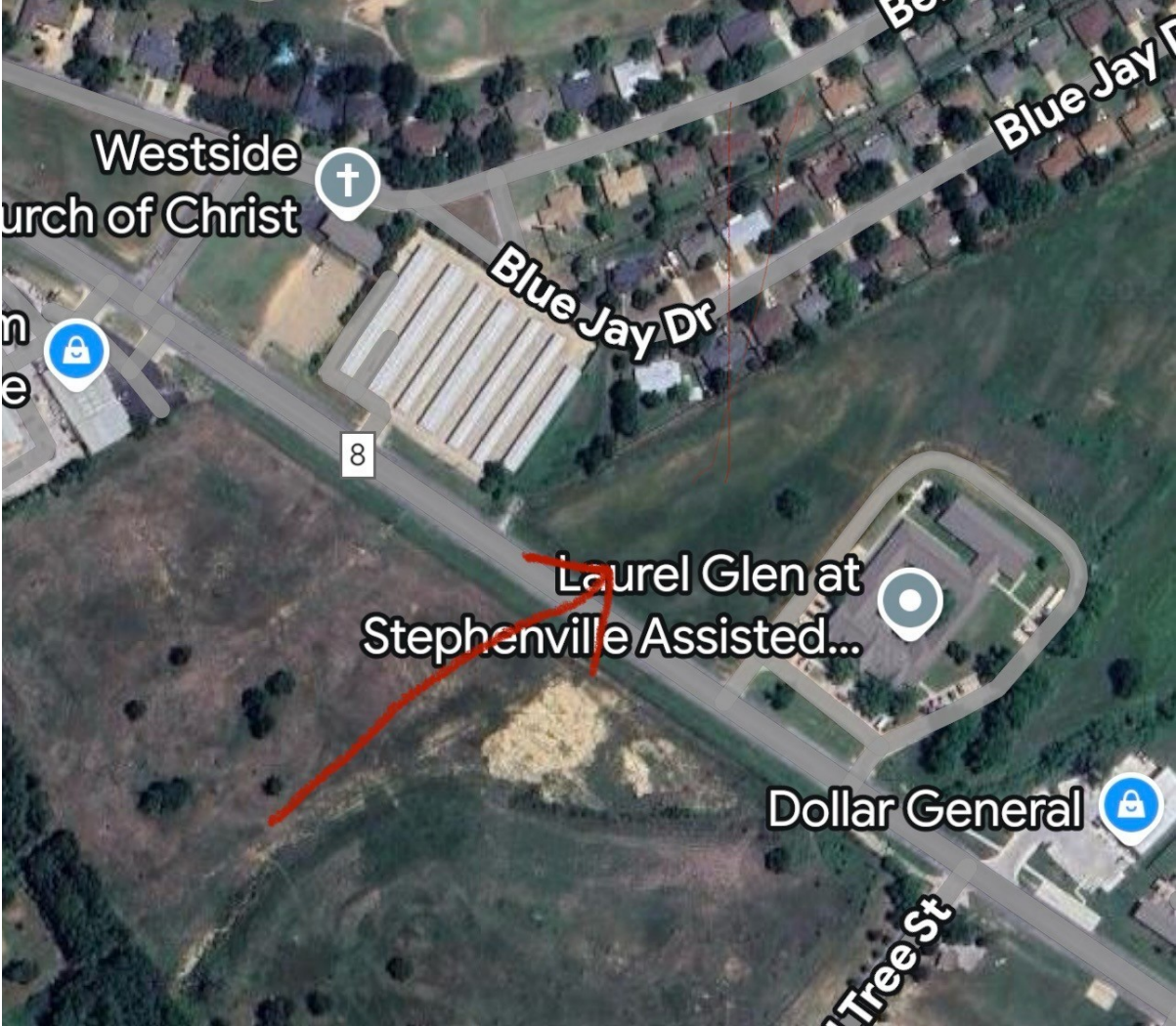


CENTURY 21

Judge Fite Company



TBD W LINGLEVILLE ROAD

STEPHENVILLE, TX 76401



\$1,300,000



1 acres

DESCRIPTION

Just over 2 acres of prime road frontage in front of new senior housing community.
Great spot to put your business!

CENTURY 21

Judge Fite Company

800.451.8055

PROPERTY TYPE: Land - Unimproved Land
MLS STATUS: Active
MLS: 21017237
YEAR BUILT:
COUNTY: Erath
TRACT OR SUBDIVIION: Menefee Jarrett
LIST DATE: 07/30/2025

AREA:
SQUARE FEET:
TOTAL BEDS:
FULL BATHS:
HALF BATHS:
ACRES: 2.12
LOT SIZE (SQFT): 92,303

EXTERIOR FEATURES

LOT DESCRIPTION:

- Cleared
- Level

UTILITIES

UTILITIES:

- None

ADDITIONAL PROPERTY DETAILS

LISTED BY: Chessney Fornes 

PHONE: 254.965.5051

BROKERED BY: RE/MAX Elevated Realty

century21judgefite.com

each office is independently owned and operated