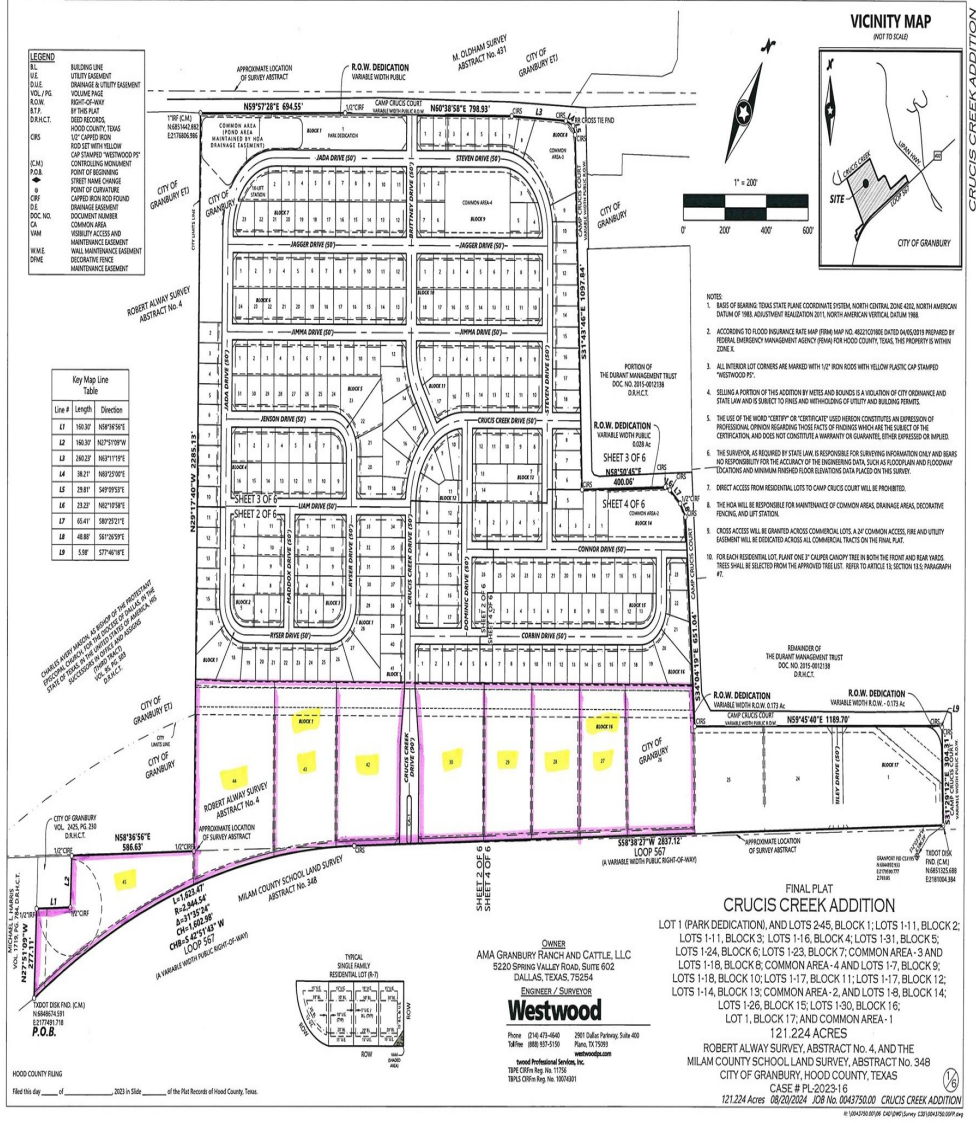


# CENTURY 21

## Judge Fite Company

© 2023 Westwood Professional Services, Inc.



# TBD 42 LOOP 567

## GRANBURY, TX 76048

\$1,255,225 0 sqft

## DESCRIPTION

This commercial lot has double frontage on Loop 567 as well as Camp Crucis Ct. and is part of a recently platted Subdivision known as Crucis Creek Addition. There are 305 SINGLE FAMILY LOTS platted immediately behind this property WHICH IS AVAILABLE AS WELL. This location is grandfathered for City water and sewer.

**CENTURY 21**

Judge Fite Company

**800.451.8055**

**PROPERTY TYPE:** Commercial - Unimproved Land  
**MLS STATUS:** Active  
**MLS:** 21007848  
**YEAR BUILT:**  
**COUNTY:** Hood  
**TRACT OR SUBDIVIION:** Crucis Creek  
**LIST DATE:** 07/23/2025

**AREA:**  
**SQUARE FEET:**  
**TOTAL BEDS:**  
**FULL BATHS:**  
**HALF BATHS:**  
**ACRES:** 3.6  
**LOT SIZE (SQFT):** 156,903

## EXTERIOR FEATURES

**SIDING:**

- Other

## UTILITIES

**UTILITIES:**

- SewerAvailable
- WaterAvailable

## ADDITIONAL PROPERTY DETAILS

**LISTED BY:** Jimmy Martin 

**PHONE:** 817.441.2255

**BROKERED BY:** RAILHEAD REALTY, LLC

century21judgefite.com

each office is independently owned and operated