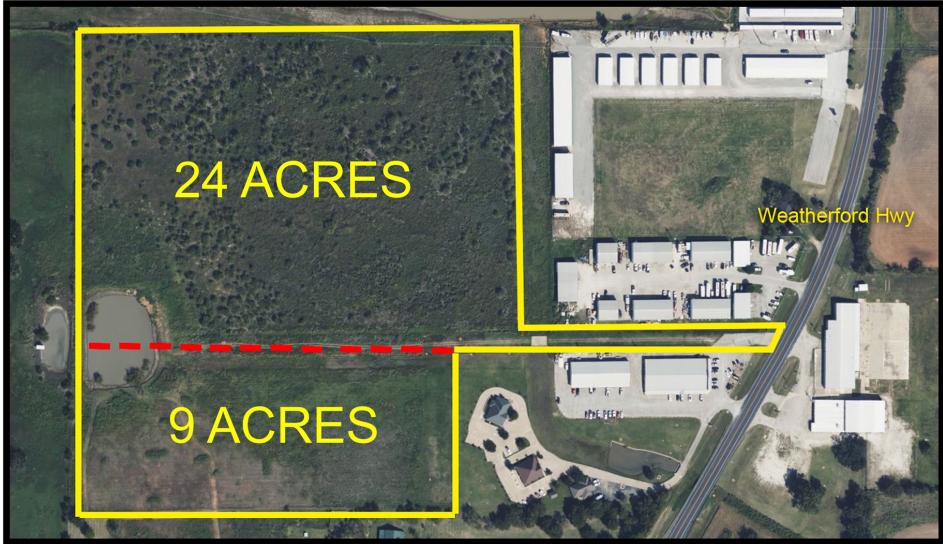


CENTURY 21

Judge Fite Company

33 ACRE PRIME BUILDING SITE **FOR SALE**

WATER & SEWER ON SITE PROPERTY CAN BE DIVIDED



1312 WEATHERFORD HIGHWAY

GRANBURY, TX 76048



\$999,000



1 acres

DESCRIPTION

EXCEPTIONAL OPPORTUNITY - 33+ acres with CITY WATER AND SEWER ON THE PROPERTY and easy access off of Highway 51 (Weatherford Hwy) Currently zoned Interim Hold, would make an exceptional location for a mid range priced housing development, with an elementary school just minutes from this location. Comprehensive Land Use Plan for City of Granbury proposed use is low density residential. Downtown Granbury is less than 5 minutes away for shopping, dining and entertainment venues. and it's an easy commute to Weatherford. Contact LO for details.

PROPERTY TYPE: Land - Unimproved Land
MLS STATUS: Active
MLS: 20948983
YEAR BUILT:
COUNTY: Hood
TRACT OR SUBDIVIION: Park 51
LIST DATE: 05/28/2025

CENTURY 21

Judge Fite Company

800.451.8055

AREA:
SQUARE FEET:
TOTAL BEDS:
FULL BATHS:
HALF BATHS:
ACRES: 33.01
LOT SIZE (SQFT): 1,438,046

INTERIOR FEATURES

VIRTUAL TOUR:

- [View virtual tour](#)

EXTERIOR FEATURES

LOT DESCRIPTION:

- Acreage
- Cleared
- InteriorLot
- Level
- Subdivided
- CityLot

FENCING:

- None

UTILITIES

UTILITIES:

- ElectricityAvailable
- SewerAvailable
- WaterAvailable

ADDITIONAL PROPERTY DETAILS

LISTED BY: Pam Knieper 

PHONE: 817.579.7900

BROKERED BY: Knieper Realty, Inc.