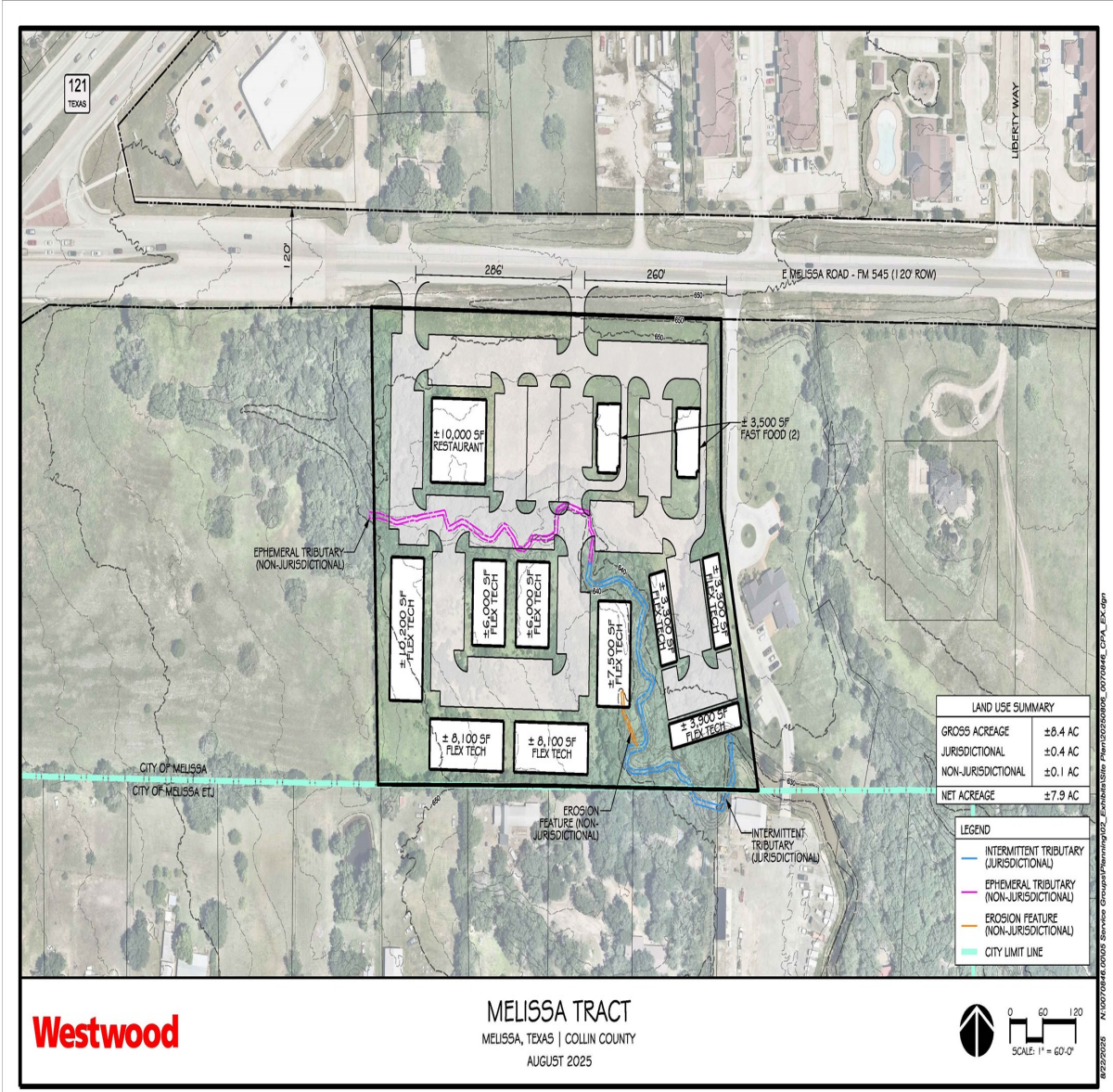


CENTURY 21®

Judge Fite Company



Westwood

MELISSA TRACT
MELISSA, TEXAS | COLLIN COUNTY
AUGUST 2025



TBD E FM 545 (MELISSA ROAD)

MELISSA, TX 75454



\$3,988,536



1 acres

DESCRIPTION

8.439 Ac on E Melissa Road AKA FM 545. Melissa future land use map shows a preference for retail zoning and use. This property lies on the south side of FM 545, aka E Melissa Road, just east of the CVS pharmacy at SH 121 and FM 545.

CENTURY 21

Judge Fite Company

800.451.8055

PROPERTY TYPE: Land - Unimproved Land

MLS STATUS: Active

MLS: 20903346

YEAR BUILT:

COUNTY: Collin

TRACT OR SUBDIVIION: William Sanders Survey

LIST DATE: 04/15/2025

AREA:

SQUARE FEET:

TOTAL BEDS:

FULL BATHS:

HALF BATHS:

ACRES: 8.44

LOT SIZE (SQFT): 367,602

INTERIOR FEATURES

VIRTUAL TOUR:

- [View virtual tour](#)

EXTERIOR FEATURES

LOT DESCRIPTION:

- Acreage
- CityLot

UTILITIES

UTILITIES:

- ElectricityAvailable

ADDITIONAL PROPERTY DETAILS

LISTED BY: Kelly Davis 

PHONE: 214.533.1802

BROKERED BY: RE/MAX Dallas Suburbs

century21judgefite.com

each office is independently owned and operated