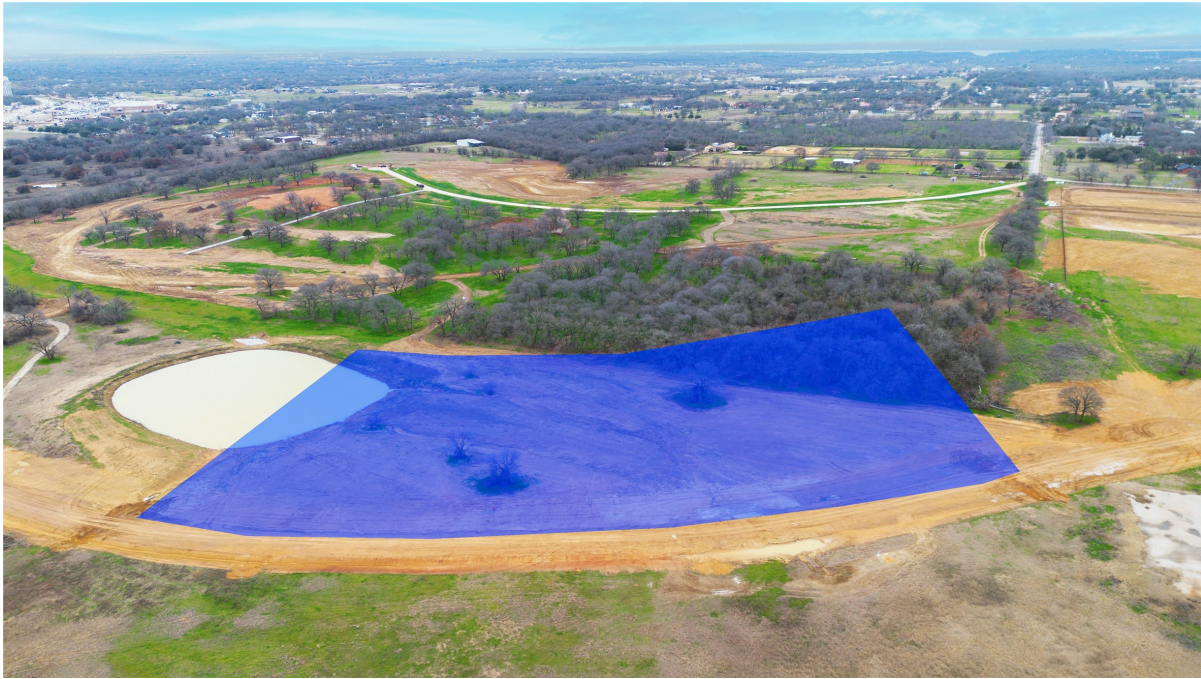


# CENTURY 21<sup>®</sup>

Judge Fite Company



## LOT 8 WIESEN ROAD

BARTONVILLE, TX 76226



\$1,652,750



1 acres

---

## DESCRIPTION

Knights Landing is Bartonville's first and only privately gated ranch estate community, a rare and limited-release enclave offering just 15 exclusive six-acre Ag-exempt homesites starting at \$1.35M. Fully improved with utilities and ready to build, this private estate community is located in Bartonville. This property feeds into the highly rated Hilltop Elementary School, Argyle Middle School, and Argyle High School. It is also conveniently located just 10 minutes from Liberty Christian Academy. Designed for those who value land, privacy, and permanence, Knights Landing represents a level of estate living unmatched anywhere in North Texas. Each expansive six-acre homesite provides the freedom to create a true generational estate, whether that vision includes equestrian facilities, guest residences, car barns, sports courts, orchards, gardens, or resort-style outdoor living. Every property carries Ag-exempt status, allowing owners to benefit from dramatically reduced annual taxes, making this offering not only a lifestyle upgrade but also a strategic long-term land investment. As the first gated residential community ever approved in Bartonville, Knights Landing features a secured private entrance, architectural standards, and perimeter privacy designed to preserve both the identity and long-term value of the community. Select homesites also feature a protected open utility corridor behind the property, creating a permanent open-space buffer that enhances privacy and protects unobstructed views. Knights Landing is not a typical subdivision but a curated opportunity for generational living, where each six-acre parcel becomes a canvas for architecture with presence, purpose, and permanence. What you are truly acquiring is more than acreage, it is a rare piece of Bartonville land, a tax-efficient hard asset, a protected gated estate address, and the foundation to design a legacy property meant to endure for generations.

**PROPERTY TYPE:** Land - Unimproved Land  
**MLS STATUS:** Active  
**MLS:** 20845867  
**YEAR BUILT:**  
**COUNTY:** Denton  
**TRACT OR SUBDIVIION:** Knights Landing  
**LIST DATE:** 02/24/2025

**CENTURY 21**

Judge Fite Company

**800.451.8055**

**AREA:**  
**SQUARE FEET:**  
**TOTAL BEDS:**  
**FULL BATHS:**  
**HALF BATHS:**  
**ACRES:** 6.01  
**LOT SIZE (SQFT):** 261,795

## INTERIOR FEATURES

### VIRTUAL TOUR:

- [View virtual tour](#)

## EXTERIOR FEATURES

### LOT DESCRIPTION:

- Acreage
- BackYard
- Cleared
- Greenbelt
- InteriorLot
- Lawn
- Subdivision
- CityLot

### FENCING:

- None

## UTILITIES

### UTILITIES:

- CableAvailable
- ElectricityAvailable
- NaturalGasAvailable
- PhoneAvailable
- SepticAvailable
- SeparateMeters
- WaterAvailable

## ADDITIONAL PROPERTY DETAILS

### COMMUNITY:

- TrailsPaths
  - Curbs
- 

**LISTED BY:** Michael Hershenberg 

**PHONE:** 817.657.2470

**BROKERED BY:** Real Broker, LLC