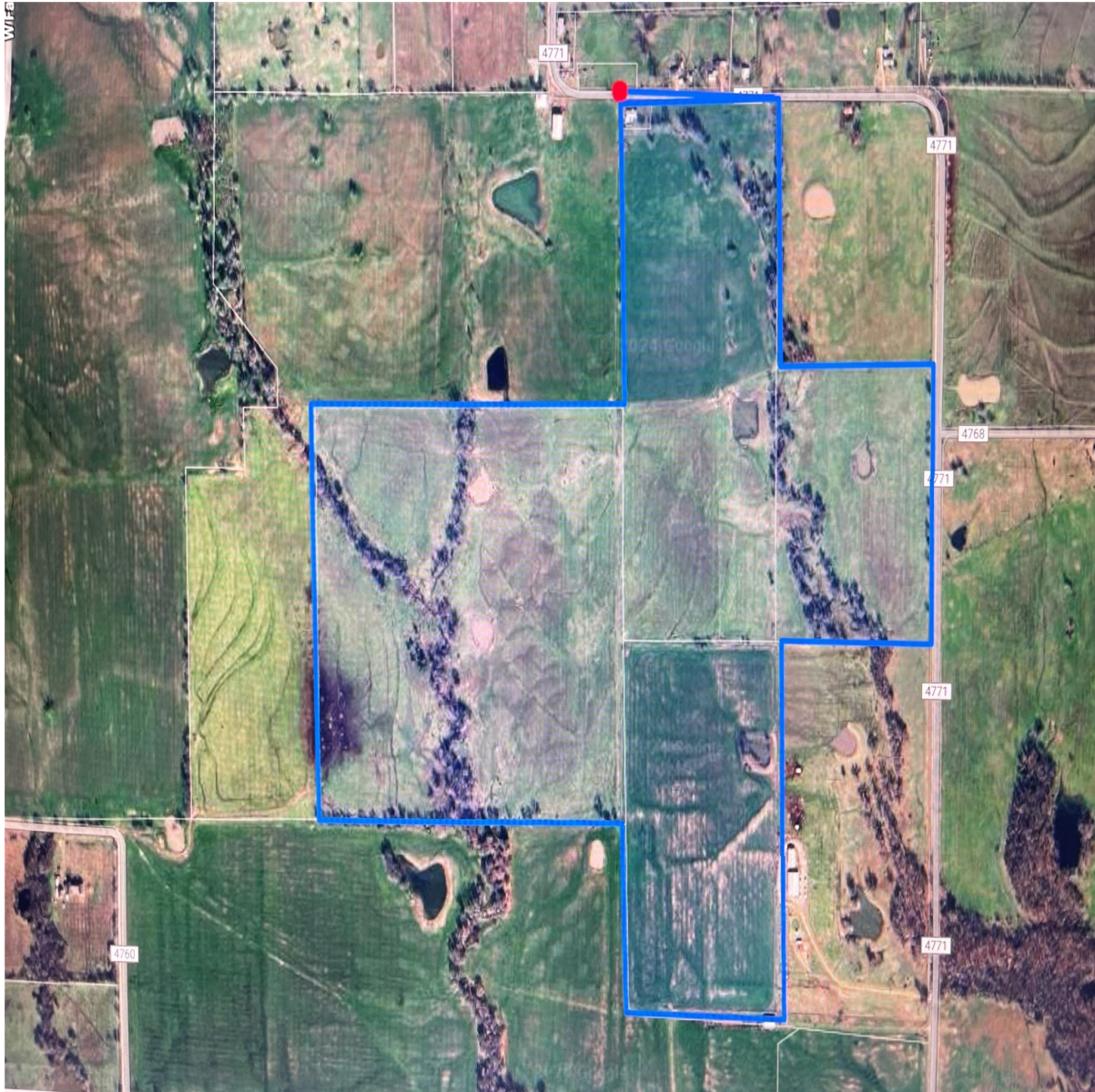


# CENTURY 21<sup>®</sup>

Judge Fite Company



## CR 4771

SULPHUR SPRINGS, TX 75482



\$2,491,000



1 acres

## DESCRIPTION

Meticulously maintained on 184.52+- acres just 10 minutes from Sulphur Springs. Fully fenced & cross fenced w 6 strand barb wire & pipe fencing. 5 ponds, Fully self sustained, producing hay for sale as well. Very close to Cooper Lake, you'll find hiking trails, cabins, fishing, and swimming at Cooper Lake State Park. A panoramic Ag-Exempt acres! Bring plans for your dream house or just enjoy your own piece of quiet countryside. . A convenient location with easy access of major roads More acreage available. Lots of possibilities! Water line is in the frontage of the road power available.

**PROPERTY TYPE:** Land - Unimproved Land  
**MLS STATUS:** Active  
**MLS:** 20842895  
**YEAR BUILT:**  
**COUNTY:** Hopkins  
**TRACT OR SUBDIVIION:** LUCINGER B  
**LIST DATE:** 02/13/2025

**CENTURY 21**

Judge Fite Company

**800.451.8055**

**AREA:**  
**SQUARE FEET:**  
**TOTAL BEDS:**  
**FULL BATHS:**  
**HALF BATHS:**  
**ACRES:** 184.52  
**LOT SIZE (SQFT):** 8,037,691

## INTERIOR FEATURES

### VIRTUAL TOUR:

- [View virtual tour](#)

## EXTERIOR FEATURES

### LOT DESCRIPTION:

- Acreage
- Level
- Other

## UTILITIES

### UTILITIES:

- ElectricityAvailable
- WaterAvailable

## ADDITIONAL PROPERTY DETAILS

**LISTED BY:** Indu Mandadi 

**PHONE:** 972.798.2110

**BROKERED BY:** Fair Deal Realty