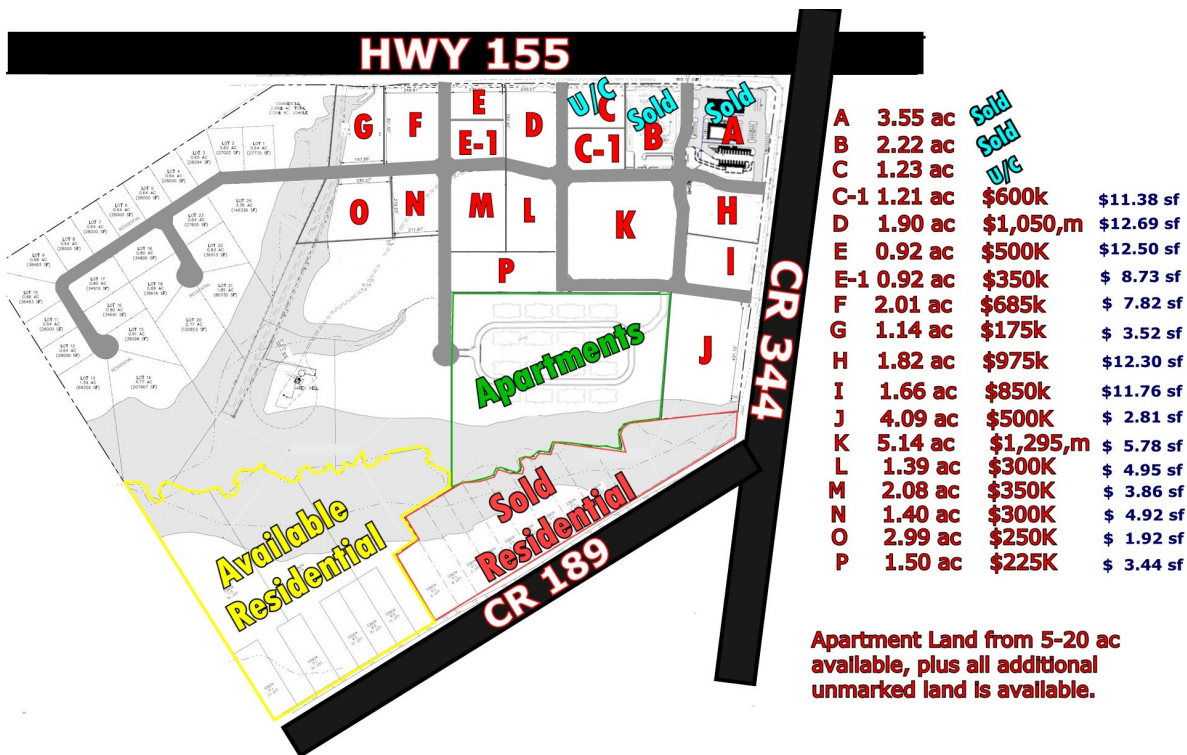


CENTURY 21

Judge Fite Company



Apartment Land from 5-20 ac available, plus all additional unmarked land is available.

20175 S HWY 155 LOT I

FLINT, TX 75762



\$850,000



0 sqft

DESCRIPTION

Deed Restrictions: No C-stores, Grocery Stores, or retailers of any kind selling gasoline. No full service breakfast restaurants or drivethru fast food burgers.

CENTURY 21

Judge Fite Company

800.451.8055

PROPERTY TYPE: Commercial - Unimproved Land
MLS STATUS: Active
MLS: 20822869
YEAR BUILT:
COUNTY: Smith
TRACT OR SUBDIVIION: Don Thomas Quevado 7 League Gr
LIST DATE: 01/21/2025

AREA:
SQUARE FEET:
TOTAL BEDS:
FULL BATHS:
HALF BATHS:
ACRES: 1.66
LOT SIZE (SQFT): 72,309

INTERIOR FEATURES

VIRTUAL TOUR:

- [View virtual tour](#)

EXTERIOR FEATURES

LOT DESCRIPTION:

- Acreage
- CornerLot
- IrregularLot

SIDING:

- Other

UTILITIES

UTILITIES:

- ElectricityAvailable
- PhoneAvailable
- SewerAvailable
- WaterAvailable

ADDITIONAL PROPERTY DETAILS

LISTED BY: Ray Ver Hey 

PHONE: 903.266.2900

BROKERED BY: Staples Commercial Group, LLC

century21judgefite.com

each office is independently owned and operated