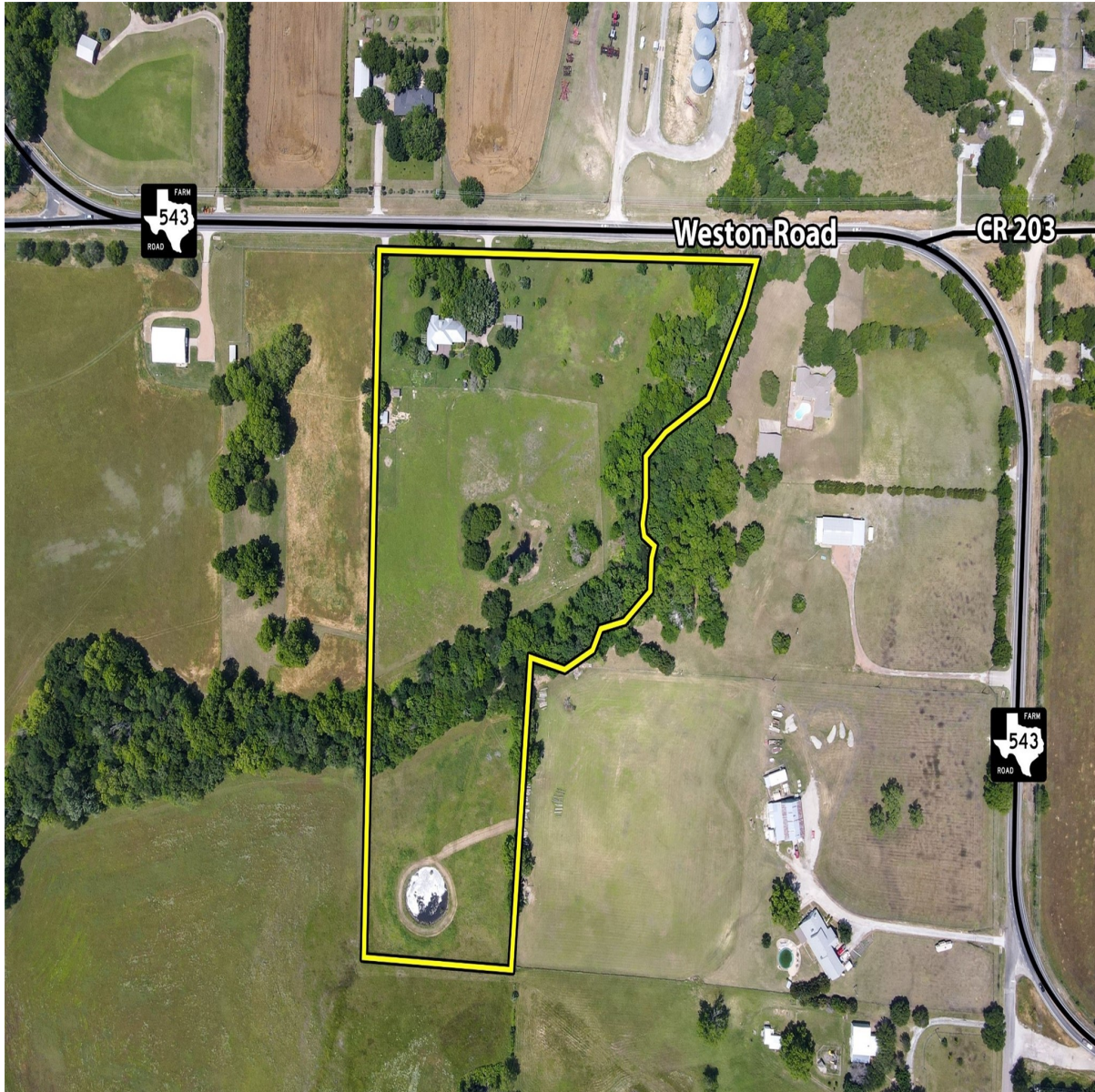


CENTURY 21[®]

Judge Fite Company



6159 FM 543

MCKINNEY, TX 75071



\$3,669,494



1 acres

DESCRIPTION

Prime unrestricted 12.96 acres for investment or future development just northwest of McKinney featuring mature trees, a quality home, stunning views, and a creek. Known as Roland Farm, this property boasts excellent frontage, rolling terrain, a separate insulated workshop with heating, air conditioning, and 220V power, ponds, and a wooded creek along the east boundary. The home is shaded by large trees and offers a priceless view from the spacious back porch and Trex decking. This charming home is well-maintained with a standing seam metal roof, generously sized rooms, and an open living area with beautiful views. It includes a Thermador gas range, a large pantry, and ample storage. The three-car garage is divided into a regular two-car space and a third area used as a finished workspace with HVAC. The land features a water well, a 1500-gallon supply tank, a garden shed, a livestock shed, and a hen house. This exceptional location is approximately 5 miles northwest of McKinney.

PROPERTY TYPE: Land - Unimproved Land
MLS STATUS: Active
MLS: 20623601
YEAR BUILT:
COUNTY: Collin
TRACT OR SUBDIVIION: NA
LIST DATE: 06/04/2024

CENTURY 21

Judge Fite Company

800.451.8055

AREA:
SQUARE FEET:
TOTAL BEDS:
FULL BATHS:
HALF BATHS:
ACRES: 12.97
LOT SIZE (SQFT): 564,973

EXTERIOR FEATURES

LOT DESCRIPTION:


- Acreage

UTILITIES

UTILITIES:

- Other

ADDITIONAL PROPERTY DETAILS

LISTED BY: Raymond Eckenrode 

PHONE: 972.562.9988

BROKERED BY: Appian Commercial Realty, LLC

century21judgefite.com

each office is independently owned and operated