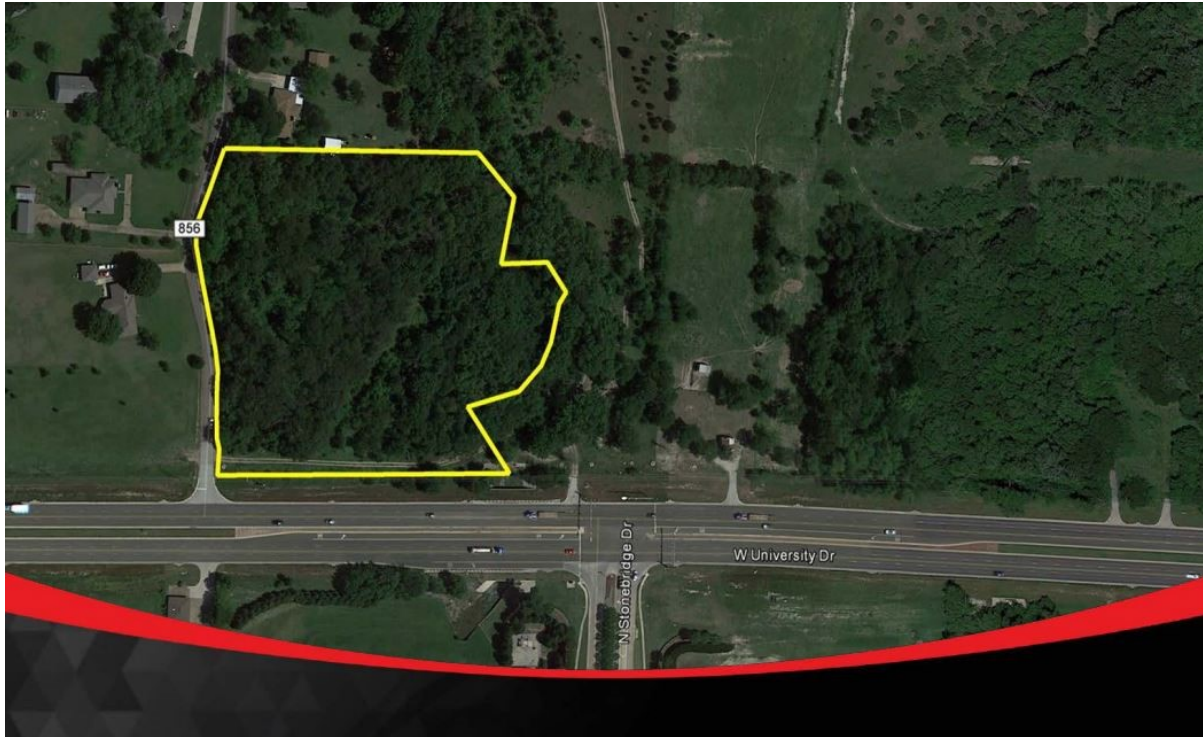


CENTURY 21

Judge Fite Company



U.S. HWY 380

MCKINNEY, TX 75071



\$2,356,160



1 acres

DESCRIPTION

Prime property with 505 ft of desirable frontage on Highway 380. Wooded with creek running to the east of the property making possible creek view lots for residences or office spaces. Water stubouts along 380. Access to property is from Road 856. Includes Parcels 973432, 973441, 966477. Future planning Suburban Mix - Neighborhood and Light Commercial.

CENTURY 21

Judge Fite Company

800.451.8055

PROPERTY TYPE: Land - Unimproved Land
MLS STATUS: Active
MLS: 20426063
YEAR BUILT:
COUNTY: Collin
TRACT OR SUBDIVIION: George Crutchfield
LIST DATE: 06/04/2024

AREA:
SQUARE FEET:
TOTAL BEDS:
FULL BATHS:
HALF BATHS:
ACRES: 3.61
LOT SIZE (SQFT): 157,077

EXTERIOR FEATURES

LOT DESCRIPTION:

- Acreage
- CornerLot
- FewTrees
- CityLot

UTILITIES

UTILITIES:

- ElectricityNotAvailable
- SewerNotAvailable

ADDITIONAL PROPERTY DETAILS

LISTED BY: Kay Clifton 

PHONE: 972.562.9090

BROKERED BY: RES Real Estate Services

century21judgefite.com

each office is independently owned and operated