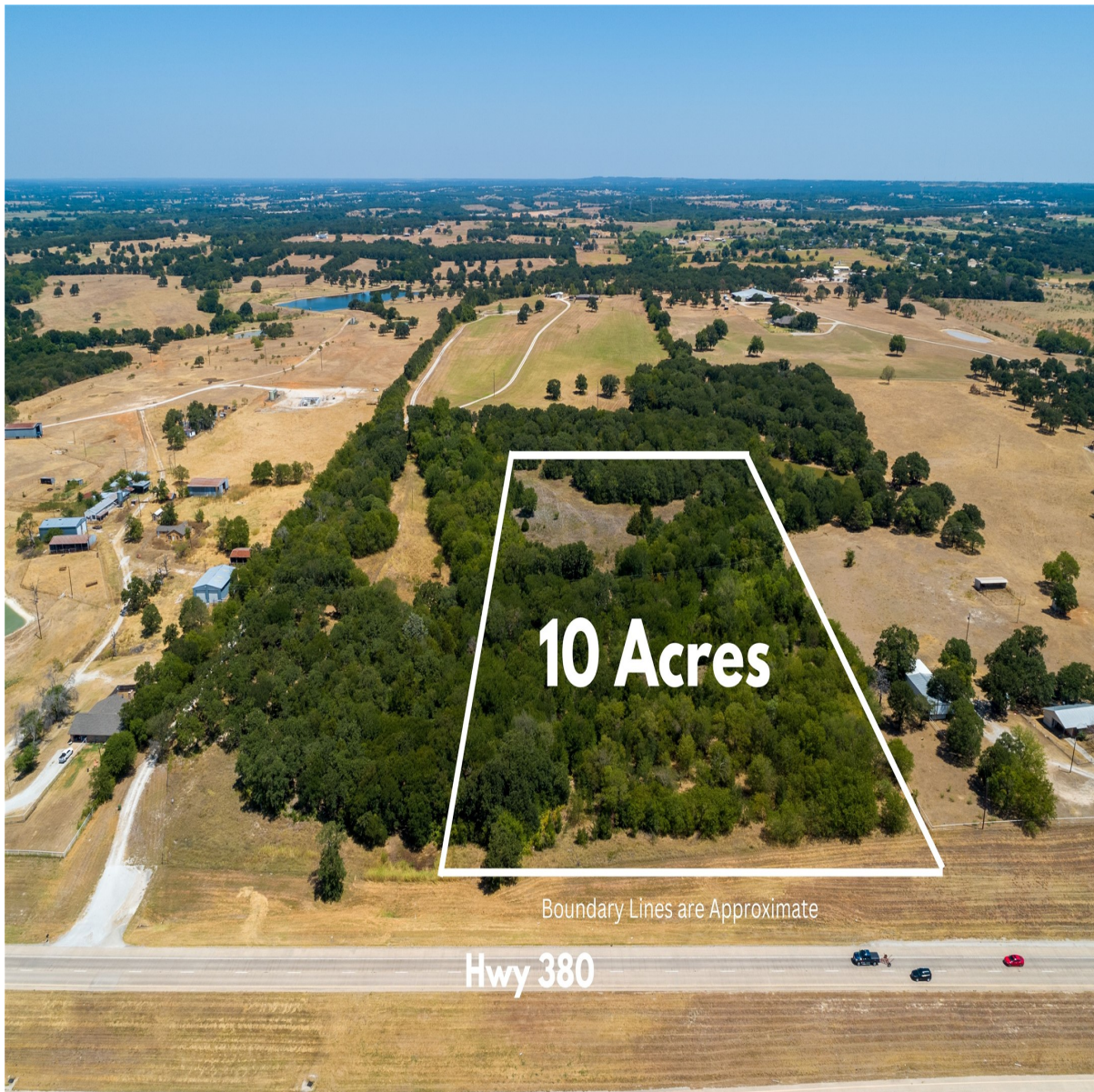


CENTURY 21[®]

Judge Fite Company



TBD HWY 380

DECATUR, TX 76234



\$951,000



1 acres

DESCRIPTION

The opportunities are endless with this wonderful treed piece of property. 10.1 acres of land that includes trees, rolling hills, Highway frontage and more. It would make a perfect spot for a sprawling ranchette with so many options. Decatur ISD schools, located outside of the city limits but just minutes from town. Get all of the perks of country living with the availability all necessities close by. The approximate boundaries would include 535 feet of HWY 380 Frontage opening up many options. There are not many tracts like this so don't miss this opportunity to own a piece of a rapid growing community!

PROPERTY TYPE: Land - Unimproved Land
MLS STATUS: Active
MLS: 20398811
YEAR BUILT:
COUNTY: Wise
TRACT OR SUBDIVIION: A0516 - A-516 GW LERNOYN
LIST DATE: 06/04/2024

CENTURY 21

Judge Fite Company

800.451.8055

AREA:
SQUARE FEET:
TOTAL BEDS:
FULL BATHS:
HALF BATHS:
ACRES: 10.01
LOT SIZE (SQFT): 436,035

INTERIOR FEATURES

VIRTUAL TOUR:

- [View virtual tour](#)

EXTERIOR FEATURES

LOT DESCRIPTION:

- Acreage
- Agricultural
- Pasture
- RollingSlope
- ManyTrees

FENCING:

- BarbedWire

UTILITIES

UTILITIES:

- ElectricityAvailable
- OverheadUtilities

ADDITIONAL PROPERTY DETAILS

LISTED BY: Chase Kirby 

PHONE: 972.966.6683

BROKERED BY: Repeat Realty, LLC

century21judgefite.com

each office is independently owned and operated