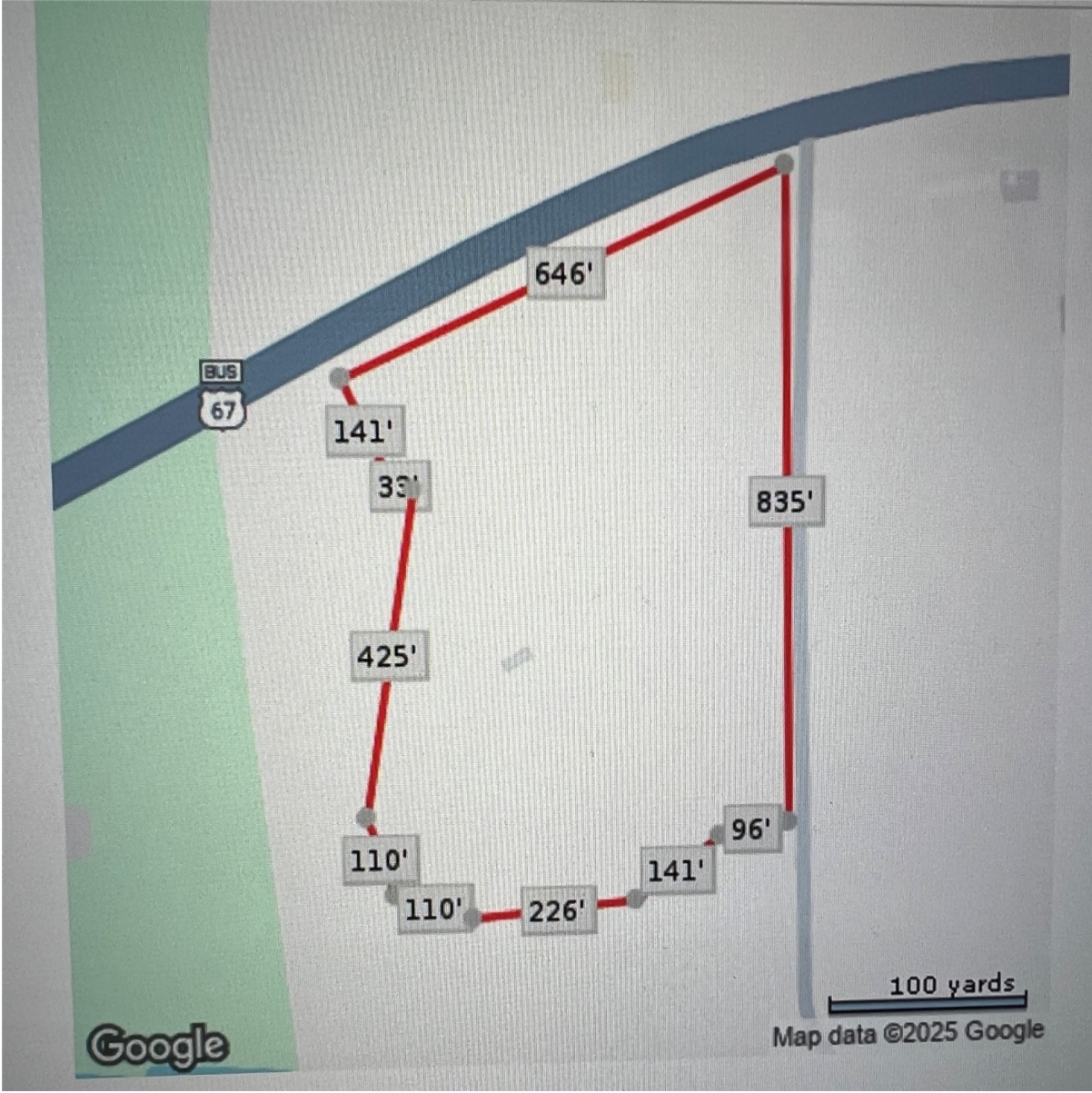


CENTURY 21

Judge Fite Company



2122 MAIN STREET

SULPHUR SPRINGS, TX 75482



\$725,000



0 sqft

DESCRIPTION

646' of Hwy 67 - Main St frontage. Strategically located 10 acres on Main Street, 5 minutes from historical downtown Sulphur Springs. This is a perfect location for many different possibilities! Excellent opportunity for development in this quickly growing town that is attracting new business and industry. Close proximity to interstate access. City water and sewer at the road. Property is located within .5 miles of several well-established businesses and manufacturers. Currently zoned light industrial but surrounded by single-family zoning. Many possibilities with this tract! AADT in 2023 was 3,319.

PROPERTY TYPE: Commercial - Unimproved Land
MLS STATUS: Active
MLS: 20330312
YEAR BUILT:
COUNTY: Hopkins
TRACT OR SUBDIVIION: Jose Y'barbo Surv #a1102
LIST DATE: 06/04/2024

CENTURY 21

Judge Fite Company

800.451.8055

AREA:
SQUARE FEET:
TOTAL BEDS:
FULL BATHS:
HALF BATHS:
ACRES: 10.1
LOT SIZE (SQFT): 440,130

INTERIOR FEATURES

VIRTUAL TOUR:

- [View virtual tour](#)

EXTERIOR FEATURES

LOT DESCRIPTION:


- Acreage
- Cleared
- Level
- Pasture
- FewTrees

UTILITIES

UTILITIES:

- ElectricityAvailable
- SewerAvailable
- WaterAvailable

ADDITIONAL PROPERTY DETAILS

LISTED BY: Sheri Autrey 

PHONE: 800.660.1022

BROKERED BY: Realty Texas LLC