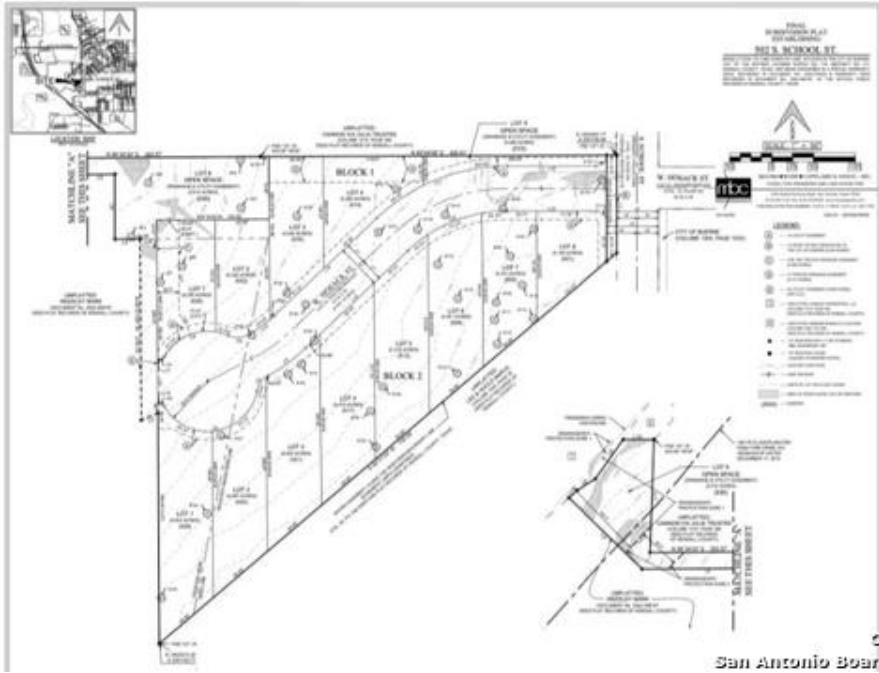


CENTURY 21®

Judge Fite Company



502 S SCHOOL

BOERNE, TX 78006



\$1,590,000



0 sqft

DESCRIPTION

Shovel Ready self development opportunity of 12 Single-Family Lots in Boerne. 12 Paper lots are fully ENGINEERED and APPROVED by City of Boerne (65' wide minimum x 120'+). Only 0.5 mile from Main Street, this is a unique development opportunity for a small enclave of homes. Seller also has bids from three (3) different site contracts. Perfect opportunity for a builder/developer to control your own destiny with house plan designs, exterior materials, interior finishes, square footages, etc... Take advantage of the charm and lifestyle of downtown Boerne.

PROPERTY TYPE: Commercial - Commercial Land
MLS STATUS: Active
MLS: 1866328
YEAR BUILT:
COUNTY: Kendall
TRACT OR SUBDIVIION:
LIST DATE: 05/14/2025

CENTURY 21

Judge Fite Company

800.451.8055

AREA: 2508
SQUARE FEET:
TOTAL BEDS:
FULL BATHS:
HALF BATHS:
ACRES: 5.61
LOT SIZE (SQFT): 244,328

ADDITIONAL PROPERTY DETAILS

LISTED BY: Gregory Jones

PHONE: 210.585.1699

BROKERED BY: Fraire Realty Group, INC.