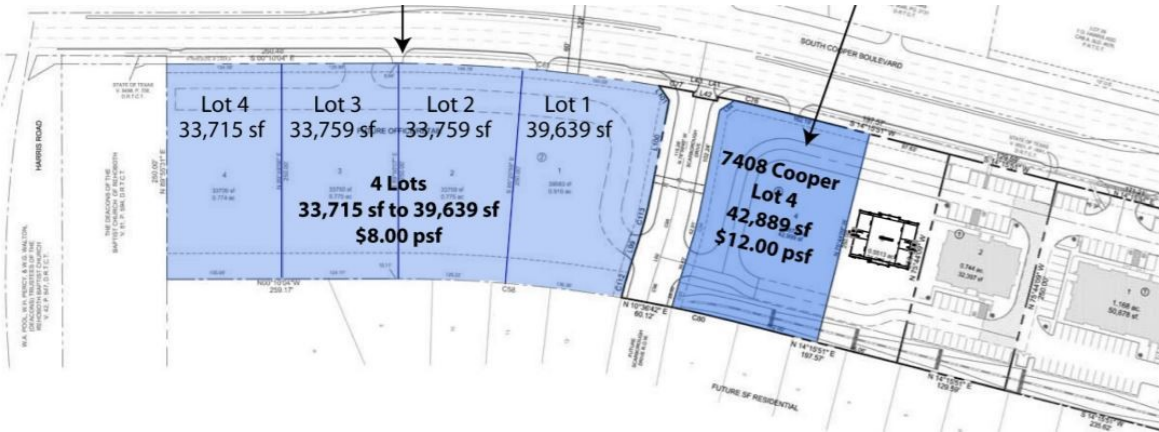


CENTURY 21

Judge Fite Company



7408 S COOPER STREET

ARLINGTON, TX 76001



\$516,000



0 sqft

DESCRIPTION

Approximate one acre tract with utilities on site and existing concrete apron on three sides of property

CENTURY 21

Judge Fite Company

800.451.8055

PROPERTY TYPE: Commercial - Unimproved Land
MLS STATUS: Active
MLS: 14755805
YEAR BUILT:
COUNTY: Tarrant
TRACT OR SUBDIVIION: Valista Office Park
LIST DATE: 04/05/2023

AREA:
SQUARE FEET:
TOTAL BEDS:
FULL BATHS:
HALF BATHS:
ACRES: 0.99
LOT SIZE (SQFT): 42,993

EXTERIOR FEATURES

LOT DESCRIPTION:

- CornerLot
- CityLot

UTILITIES

UTILITIES:

- ElectricityConnected
- SewerAvailable
- WaterAvailable

ADDITIONAL PROPERTY DETAILS

LISTED BY: Eric English 

PHONE: 817.860.0074

BROKERED BY: English Realty, LLC

century21judgefite.com

each office is independently owned and operated